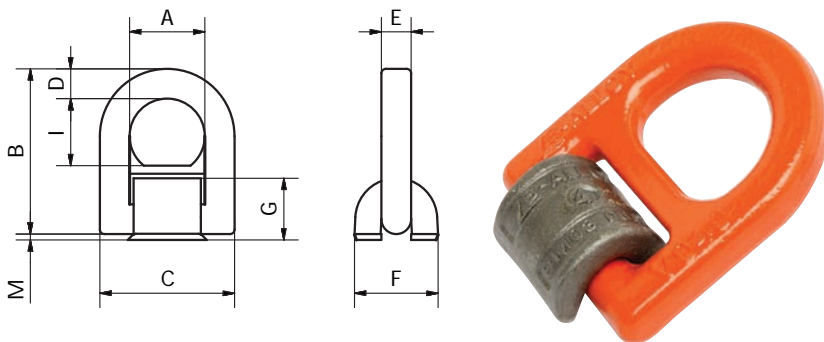


B-ALLOY-V WELD-ON LIFTING AND LASHING RINGS

B-Alloy-V Weld-on Lifting and Lashing Rings – Design Safety Factor 4:1

Code	W.L.L Tonnes (kg)	A mm	B mm	C mm	D mm	E mm	F mm	G mm	I mm	M mm	Weld mm HV+aL	Weight (kg)
BALPV015	1500	38	79	66	14	13.5	32	25	31	2	HV5+3	0.40
BALPV025	2500	45	92.5	77	16	13.5	36	27	38	3.5	HV7+3	0.60
BALPV040	4000	51	102	87	18	16.5	42	32	40.5	2	HV8+3	0.90
BALPV067	6700	67	138	115	24	22.5	61	44	55	4	HV12+4	2.0
BALPV100	10000	67.5	142	129	26.5	57.5	75	53	57.5	4	HV16+4	3.0
BALPV160	16000	100	215	190	40	26	95	69	85	5	HV25+6	6.9



Welding Instructions & Procedures

The welding should only be carried out according to EN 287 or AWS Standards by an authorised welder.

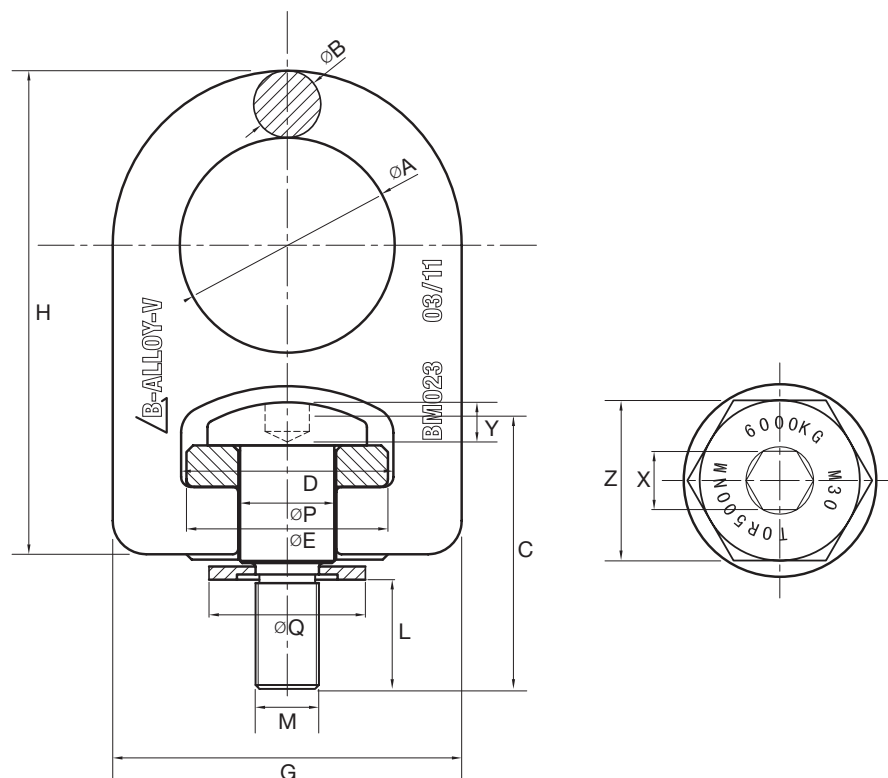
Beaver Code	WLL Tonnes	Weld Size	Weld Length	Weld Volume
BALPV015	1.5	HV 5+a3 ∇	2 x 33mm	ca. 1,2cm ³
BALPV025	2.5	HV 7+a3 ∇	2 x 40mm	ca. 2,6cm ³
BALPV040	4	HV 8+a3 ∇	2 x 40mm	ca. 3,2cm ³
BALPV067	6.7	HV 12+a4 ∇	2 x 60mm	ca. 8.7cm ³
BALPV100	10	HV 16+a4 ∇	2 x 60mm	ca. 15,5cm ³
BALPV160	16	HV 25+a6 ∇	2 x 90mm	ca. 56cm ³

Detailed welding instructions are available on request.

B-ALLOY-V BOLT-ON LIFTING AND LASHING LUG

B-Alloy-V Bolt-on Lifting and Lashing Lug – Design Safety Factor 4:1

Code	W.L.L Tonnes	M Thread Size mm	Torque N*M	L mm	A mm	B mm	C mm	D mm	E mm	H mm	G mm	P mm	Q mm	X mm	Y mm	Z mm	Weight (kg)
BRLP-M12	1	M12	100	33	35.6	11.2	60	35.3	33.5	80.5	60.5	15.6	31.2	8.03	5	25.4	0.4
BRLP- 1/2UNC	1	1/2UNC	100	33	35.6	11.2	60.3	5.3	33.5	80.5	60.5	15.6	31.2	8.03	5	25.4	0.4
BRLP-M16	1.5	M16	150	33	35.6	11.2	60	35.3	33.5	80.5	60.5	15.6	31.2	8.03	5	25.4	0.4
BRLP-M20	2.5	M20	300	33	61	19.1	82.6	60.2	57.2	137	103	26.7	53.3	15.9	9.4	44.5	1.8
BRLP-M24	4	M24	400	37	61	19.1	82.6	60.2	57.2	137	103	26.7	53.3	15	9.4	44.5	1.8
BRLP-M30	6	M30	500	50	81.3	25.4	110.8	80.3	76.2	183	137.2	35.6	71.1	22.1	15	60.3	4.1
BRLP-M36	8	M36	800	54	81.3	25.4	110.8	80.3	76.2	183	137.2	35.6	71.1	22.1	15	60.3	4.1
BRLP-M42	10	M42	1000	63	101.6	31.8	139.4	100.3	95.3	229	171.5	44.5	88.9	27.1	18	76.2	9



FEATURES

- High strength lifting or lashing point
- Has full working load limit at all angles & rotations
- Easily attached to the required lifting base or item
- Design Safety Factor 4:1
- All B-Alloy-V Bolt-On Lugs are 100% magnetically crack inspected (MCI)
- Eye screw in electro galvanised finish
- Durable powder coated finish of the lifting lug
- Functional compact design
- Lifting lug with raised markings indicating Month & Year of manufacture, W.L.L. & B-Alloy-V ID & test number for accurate traceability.
- Eye screw with raised markings showing W.L.L, size of thread & torque required when tightening
- Test Certificate available
- Several sizes available with UNC threads
- Batch tested using Beaver's NATA accredited laboratories & state of the art technology

