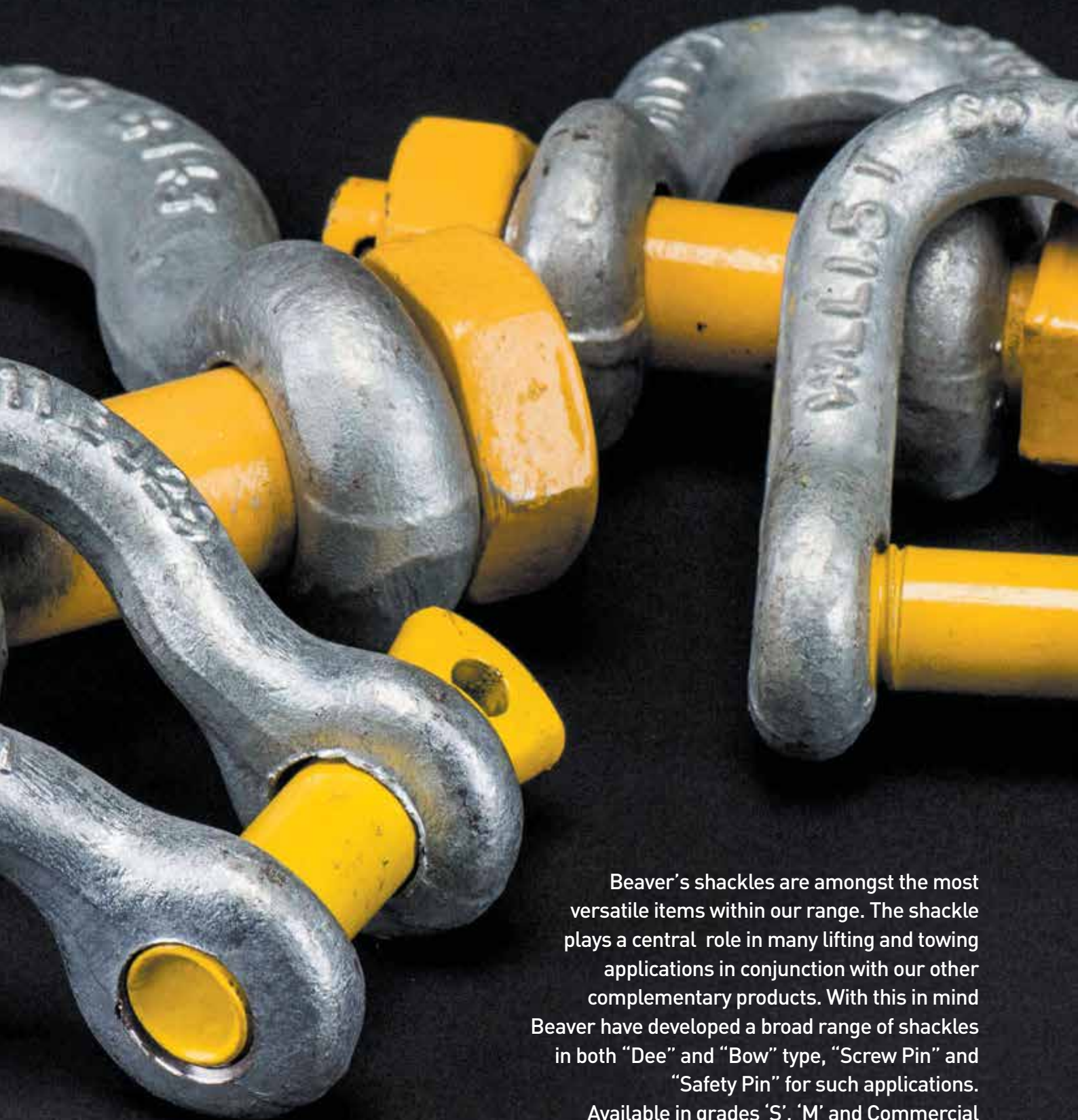




SHACKLES

4



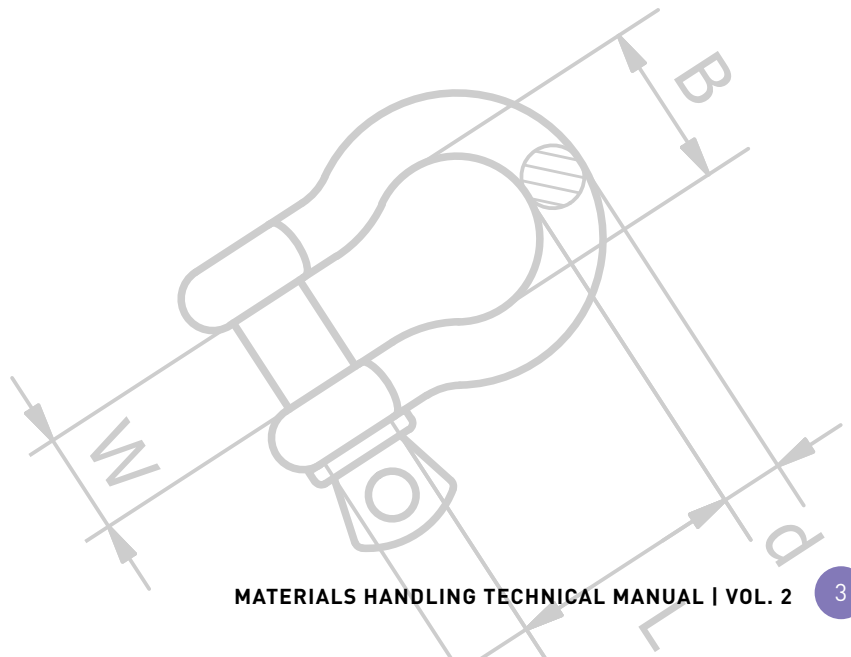
Beaver's shackles are amongst the most versatile items within our range. The shackle plays a central role in many lifting and towing applications in conjunction with our other complementary products. With this in mind Beaver have developed a broad range of shackles in both "Dee" and "Bow" type, "Screw Pin" and "Safety Pin" for such applications. Available in grades 'S', 'M' and Commercial Quality, the Beaver range of shackles are made to the highest quality standards providing the user with assurances. When you need a shackle you can be confident that Beaver will have the right one to service your requirement.



Contents

SHACKLES

BEAVER SHACKLES PRODUCT INFORMATION	4
BEAVER GRADE 'S' SHACKLES IN BUCKETS	8
BEAVER YELLOW PIN GRADE 'S' SHACKLES	10
BEAVER YELLOW PIN GRADE 'S' SAFETY PIN SHACKLES	12
BEAVER GRADE 'M' SHACKLES	14
BEAVER COMMERCIAL GRADE SHACKLES IN BUCKETS	16
PRODUCT REFERENCE GUIDE	18



BEAVER SHACKLES PRODUCT INFORMATION

Shackle Information

Shackles are used in lifting and static systems as removable links to connect (steel) wire rope, chain and other fittings.

Screw pin shackles are used mainly for non-permanent applications.

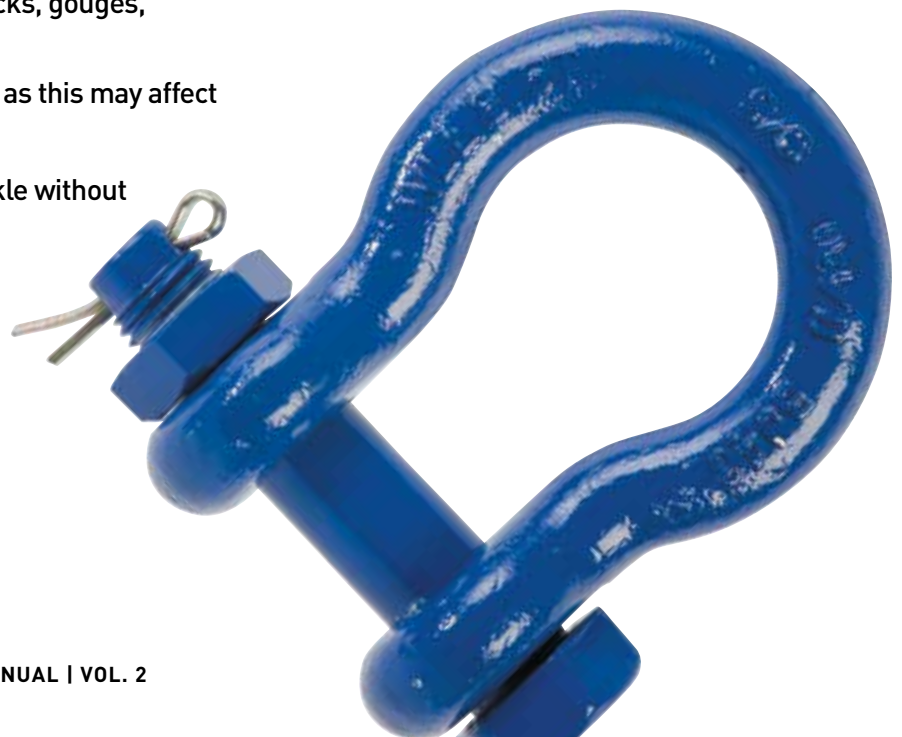
Safety pin shackles are used for long-term or permanent applications or where the load may slide on the pin causing rotation of the pin.

Dee shackles are mainly used on one-leg systems whereas anchor or bow shackles are mainly used on multi-leg systems.

Shackles should be inspected before use to ensure that:

- ▶ All markings are legible
- ▶ The threads of the pin and the body are undamaged
- ▶ The body and the pin are not distorted or unduly worn
- ▶ The body and pin are free from nicks, gouges, cracks and corrosion
- ▶ Shackles may not be heat treated as this may affect their Working Load Limit
- ▶ Never use a safety bolt type shackle without using the split cotter pin

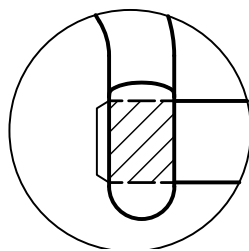
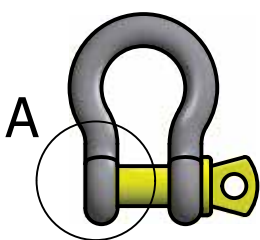
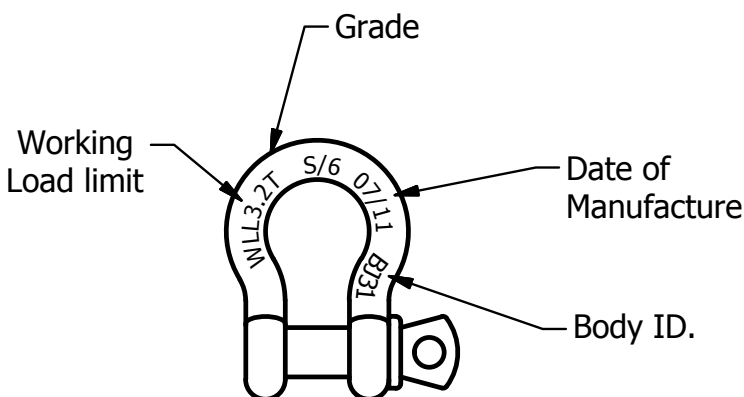
Never modify, repair or reshape a shackle by welding, heating or bending as this will affect the Working Load Limit (W.L.L).



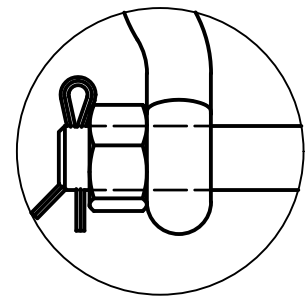
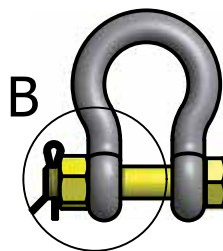
Beaver Grade 'S' Shackles

Beaver Grade S Shackles are a rated shackle that meet the requirement of AS 2741. Grade 'S' shackles are recommended where high strength is required such as lifting, towing and 4WD applications.

- Available in both Dee and Bow configurations
- Available in both Screw pin and Safety Pin type – see detail A and B for more information
- Because the pin holds more load than the body, the pin diameter is larger than the body diameter
- For the same W.L.L., they are smaller than Grade 'M'
- Beaver's Grade 'S' shackles come in two colour configurations:
 - Beaver Standard Grade 'S': Yellow pin
 - Beaver Colour Coded Grade 'S': Body and pin colour coded for easy match to components
- The Body ID and date of Manufacture = the Batch ID



Detail A
Screw Pin



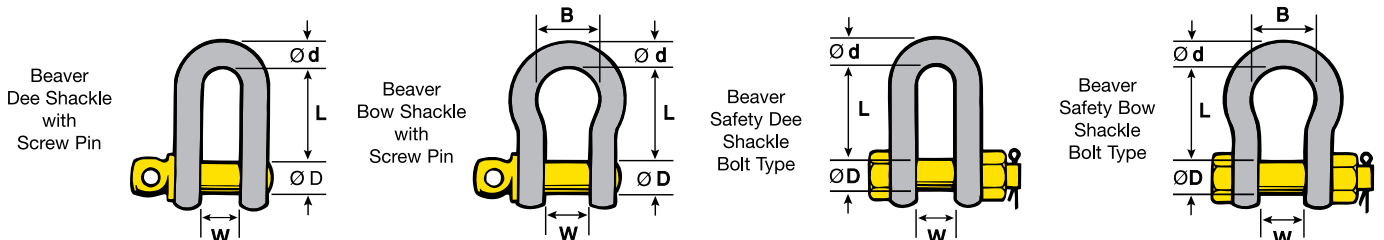
Detail B
Safety Pin

BEAVER SHACKLES PRODUCT INFORMATION

Beaver Alloy Grade 'S' or '6' Shackles - Reference Guide

With yellow painted pin to AS 2741

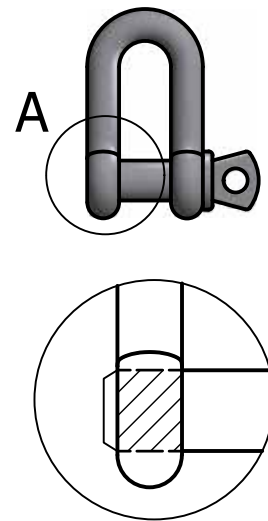
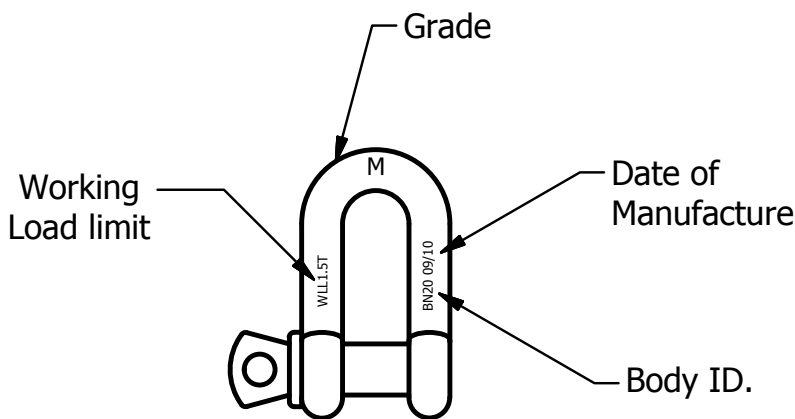
W.L.L Tonne	DIA d mm	DIA PIN D mm	Inside Width W mm	Inside Length		Width of Bow B mm	Approx Weight Each	
				Dee Type L mm	Bow Type L mm		Screw Pin Kg	Safety Pin Kg
0.33	5	6	10	—	22	15	0.02	—
0.5	6	8	12	22	29	20	0.06	0.07
0.75	8	10	13	26	31	21	0.11	0.13
1	10	11	17	32	37	26	0.15	0.17
1.5	11	13	18	37	43	29	0.21	0.25
2	13	16	21	41	48	33	0.37	0.44
3.2	16	19	27	51	61	43	0.65	0.79
4.7	19	22	32	60	72	51	1.06	1.26
6.5	22	25	37	71	84	58	1.56	1.88
8.5	25	29	43	81	95	68	2.32	2.78
9.5	29	32	46	90	108	74	3.28	3.87
12	32	35	52	100	119	83	4.51	5.26
13.5	35	38	57	113	133	92	5.43	6.94
17	38	41	60	124	146	98	7.89	8.79
25	44	51	73	146	178	127	13.40	14.99
35	51	57	83	171	197	146	18.85	20.65
45	57	63	95	181	222	160	26.06	29.01
55	63	70	105	203	267	184	37.86	41.05
85	76	83	127	229	330	200	58.68	62.24
120	89	95	146	267	381	241	—	110.00
150	102	108	165	318	432	279	—	160.00



Beaver Grade 'M' Shackles

Beaver Grade 'M' Shackles are a rated shackle that comply with the requirements of AS 2741. Grade 'M' shackles are commonly used in marine applications.

- Only available in Dee configuration
- Screw pin type only – please see drawing A for more information
- Because the pin holds more load than the body, the pin diameter is larger than the body diameter
- The Body ID and date of Manufacture = the Batch ID



Detail A
Screw Pin

Beaver Commercial Shackles

Beaver Commercial Grade Shackles are for general purpose use only and are available in both hot dipped galvanised and electro galvanised finishes. They are not produced to any standard.

- Commercial Galvanised Shackles are available in both Dee and Bow type configuration
- Commercial Electro Galvanised Shackles are available in Dee type configuration only
- Screw pin type only
- Unlike other types of shackles, commercial shackles have the same diameter pin as the body
- Not suitable for lifting or towing





BEAVER GRADE 'S' SHACKLES IN BUCKETS



Beaver's shackles in buckets offer less handling to reduce cost whilst enabling better inventory control. Supplied in a merchandise display friendly with a P.O.S. Barcode Sales Aid available.

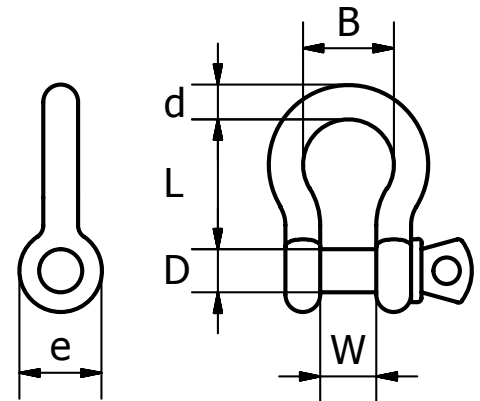


Beaver Colour Coded Screw Pin

Sizes 10mm - 25mm

Beaver Code	Size mm	Working Load Limit tonnes	Shackle Colour	Dia. d mm	Pin Dia. D mm	Inside Width W mm	Inside Length L mm	Dia. Boss e mm	Width of Bow B mm	Approx. Weight each kg	Square Bucket	Qty / Bucket	Weight / Bucket
242310MP	10 x 11	1.00	Violet	10	11	17	37	25	26	0.15	2L	30	4.23
242313MP	13 x 16	2.00	Green	13	16	21	48	33	33	0.37	2L	14	4.62
242316MP	16 x 19	3.20	Yellow	16	19	27	61	40	43	0.65	5L	20	12.40
242319MP	19 x 22	4.70	Grey	19	22	32	72	48	51	1.06	5L	10	10.70
242322MP	22 x 25	6.50	Brown	22	25	37	84	54	58	1.56	5L	8	13.12
242325MP	25 x 29	8.50	Blue	25	29	43	95	60	68	2.32	5L	4	9.20

- ▶ Beaver Alloy Grade 'S' colour coded shackles have been developed in accordance with Australian Standard AS 2741.
- ▶ All Beaver Grade 'S' shackles are easily identified with prominent stamping indicating MM/YY for quick reference of the products manufacture and working load limit.
- ▶ Test certificates are readily available on request.
- ▶ Suitable for mining, resource and construction industry applications.
- ▶ Our colour coded shackles take the guess work out of choosing the right capacity when matching lifting components.

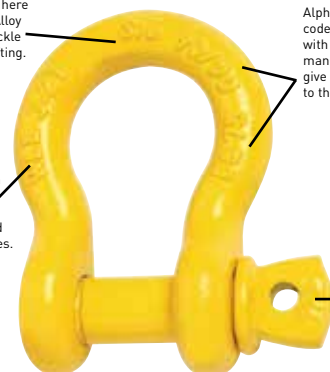


The mark S/6 here indicates an Alloy Grade 'S' shackle suitable for lifting.

Alpha-numeric codes in conjunction with Month & Year of manufacture (mm/yy) give quick reference back to the test certificate.

Individually stamped with the W.L.L. showing the Working Load Limit in tonnes.

S/6 indicates an Alloy Grade 'S' shackle pin.



SHACKLES

SECTION 4



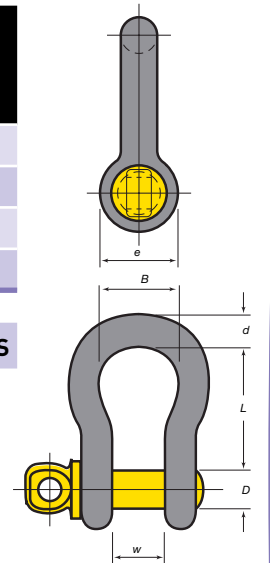
Beaver Hot Dipped Galvanised Screw Pin

Bow Shackle Bucket - Sizes 5mm - 25mm

Beaver Code	Size mm	Working Load Limit tonnes	Dia. d mm	Pin Dia. D mm	Inside Width w	Width of Bow B mm	Inside Length L mm	Dia. Boss e mm	Square Bucket	Qty / Bucket	Weight / Bucket
242305P	5 x 6	0.33	5	6	10	15	22	14	2L	100	2.70
242306P	6 x 8	0.50	6	8	12	20	29	17	2L	100	3.00
242308P	8 x 10	0.75	8	10	13	21	31	21	2L	50	4.30
242311P	11 x 13	1.50	11	13	18	29	43	27	2L	20	4.44

NOTE: Dimensions are nominal - actual dimensions fall within the tolerances of AS 2741.

BOW SHACKLES UP TO 8.5T ARE ONLY AVAILABLE IN BUCKETS



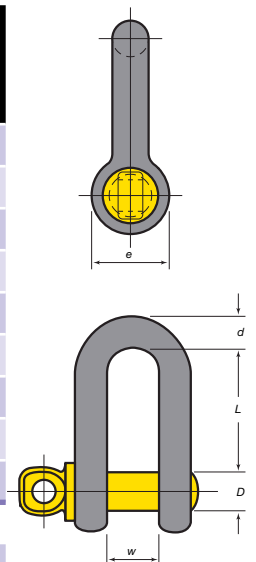
Beaver Hot Dipped Galvanised Screw Pin

Dee Shackle Bucket - Sizes 6mm - 25mm

Beaver Code	Size mm	Working Load Limit tonnes	Shackle Colour	Dia. d mm	Pin Dia. D mm	Inside Width W mm	Inside Length L mm	Dia. Boss e mm	Square Bucket	Qty / Bucket	Weight / Bucket
241306P	6 x 8	0.5	HDG	6	8	12	22	17	2L	100	2.80
241308P	8 x 10	0.75	HDG	8	10	13	26	21	2L	50	3.85
241310P	10 x 11	1.00	HDG	10	11	17	32	25	2L	30	3.90
241311P	11 x 13	1.50	HDG	11	13	18	37	27	2L	20	4.00
241313P	13 x 16	2.00	HDG	13	16	21	41	33	2L	14	4.20
241316P	16 x 19	3.20	HDG	16	19	27	51	40	5L	20	11.60
241319P	19 x 22	4.70	HDG	19	22	32	60	48	5L	10	10.20
241322P	22 x 25	6.50	HDG	22	25	37	71	54	5L	8	11.44
241325P	25 x 29	8.50	HDG	25	29	43	81	60	5L	4	8.62

NOTE: Dimensions are nominal - actual dimensions fall within the tolerances of AS 2741.

DEE SHACKLES UP TO 8.5T ARE ONLY AVAILABLE IN BUCKETS



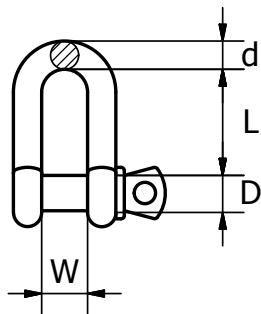
SHACKLES

BEAVER YELLOW PIN GRADE 'S' SHACKLES

Beaver Yellow Pin Grade 'S' Screw Pin Shackles to AS 2741

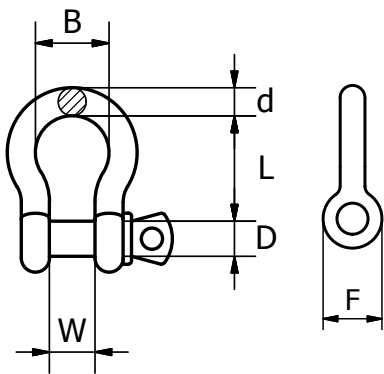
Chain Dee Type - Capacities 0.5 - 35 tonne

Code	Size mm	W.L.L Tonne	Type	Shape	Closing Method	DIA d mm	DIA PIN D mm	Inside Width W mm	Inside Length L mm	DIA Boss F mm	Approx Weight Kg	UOM	Pack Qty
241329	29 x 32	9.50	Grade S	Dee	Screw	29	32	46	90	67	3.28	Each	8
241332	32 x 35	12.00	Grade S	Dee	Screw	32	35	52	100	76	4.51	Each	5
241335	35 x 38	13.50	Grade S	Dee	Screw	35	38	57	113	84	5.43	Each	4
241338	38 x 41	17.00	Grade S	Dee	Screw	38	41	60	124	92	7.89	Each	3
241344	44 x 51	25.00	Grade S	Dee	Screw	44	51	73	146	110	13.4	Each	2
241351	51 x 57	35.00	Grade S	Dee	Screw	51	57	83	171	127	18.85	Each	1



Beaver Yellow Pin Grade 'S' Screw Pin Shackles to AS 2741*Anchor Bow Type - Capacities 0.33 - 55 tonne*

Code	Size mm	W.L.L Tonne	Type	Shape	Closing Method	DIA d mm	DIA PIN D mm	Inside Width W mm	Inside Length L mm	Width of Bow B mm	DIA Boss F mm	Approx Weight Kg	UOM	Pack Qty
242329	29 x 32	9.5	Grade S	Bow	Screw	29	32	46	108	74	67	3.28	Each	6
242332	32 x 35	12	Grade S	Bow	Screw	32	35	52	119	83	76	4.51	Each	5
242335	35 x 38	13.5	Grade S	Bow	Screw	35	38	57	133	92	84	5.43	Each	3
242338	38 x 41	17	Grade S	Bow	Screw	38	41	60	146	98	92	7.89	Each	3
242344	44 x 51	25	Grade S	Bow	Screw	44	51	73	178	127	110	13.40	Each	2
242351	51 x 57	35	Grade S	Bow	Screw	51	57	83	197	146	127	18.85	Each	1
242363	63 x 70	55	Grade S	Bow	Screw	63	70	105	267	184	152	37.86	Each	1

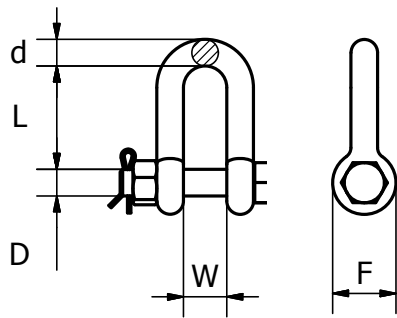


BEAVER YELLOW PIN GRADE 'S' SAFETY PIN SHACKLES

Yellow Pin Grade 'S' Safety Pin Shackles to AS 2741

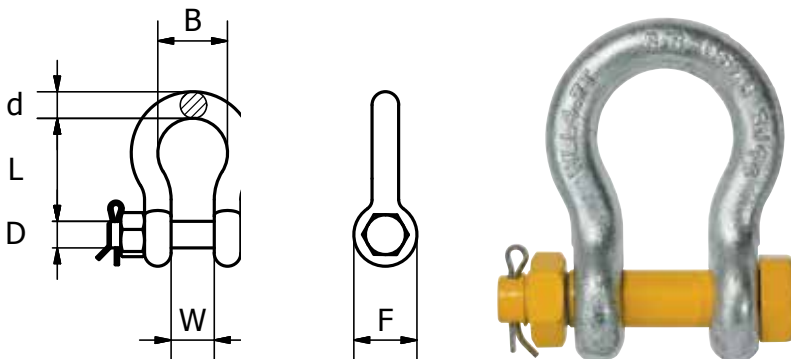
Dee Type - Capacities 2.0 - 13.5 tonne

Code	Size mm	W.L.L Tonne	Type	Shape	Closing Method	DIA d mm	DIA PIN D mm	Inside Width W mm	Inside Length L mm	DIA Boss F mm	Approx Weight Kg	UOM	Pack Qty
243313	13 x 16	2.00	Grade S	Dee	Safety Pin	13	16	21	41	33	0.44	Each	60
243316	16 x 19	3.20	Grade S	Dee	Safety Pin	16	19	27	51	40	0.79	Each	35
243319	19 x 22	4.70	Grade S	Dee	Safety Pin	19	22	32	60	48	1.26	Each	20
243322	22 x 25	6.50	Grade S	Dee	Safety Pin	22	25	37	71	54	1.88	Each	12
243325	25 x 29	8.50	Grade S	Dee	Safety Pin	25	29	43	81	60	2.78	Each	10
243329	29 x 32	9.50	Grade S	Dee	Safety Pin	29	32	46	90	67	3.87	Each	8
243332	32 x 35	12.00	Grade S	Dee	Safety Pin	32	35	52	100	76	5.26	Each	4



Beaver Yellow Pin Grade 'S' Safety Pin Shackles to AS 2741*Anchor Bow Type - Capacities 2.0 - 55 tonne*

Code	Size mm	W.L.L Tonne	Type	Shape	Closing Method	DIA d mm	DIA PIN D mm	Inside Width W mm	Inside Length L mm	Width of Bow B mm	DIA Boss F mm	Approx Weight Kg	UOM	Pack Qty
244313	13 x 16	2.00	Grade S	Bow	Safety Pin	13	16	21	48	33	33	0.44	Each	50
244316	16 x 19	3.20	Grade S	Bow	Safety Pin	16	19	27	61	43	40	0.79	Each	30
244319	19 x 22	4.70	Grade S	Bow	Safety Pin	19	22	32	72	51	48	1.26	Each	20
244322	22 x 25	6.50	Grade S	Bow	Safety Pin	22	25	37	84	58	54	1.88	Each	12
244325	25 x 29	8.50	Grade S	Bow	Safety Pin	25	29	43	95	68	60	2.78	Each	10
244329	29 x 32	9.50	Grade S	Bow	Safety Pin	29	32	46	108	74	67	3.87	Each	6
244332	32 x 35	12.00	Grade S	Bow	Safety Pin	32	35	52	119	83	76	5.26	Each	4
244335	35 x 38	13.50	Grade S	Bow	Safety Pin	35	38	57	133	92	84	6.94	Each	4
244338	38 x 41	17.00	Grade S	Bow	Safety Pin	38	41	60	146	98	92	8.79	Each	2
244345	45 x 51	25.00	Grade S	Bow	Safety Pin	45	51	73	178	127	110	14.99	Each	1
244351	51 x 57	35.00	Grade S	Bow	Safety Pin	51	57	83	197	146	127	20.65	Each	1
244357	57 x 63	45.00	Grade S	Bow	Safety Pin	57	63	97	218	156	136	32.50	Each	1
244363	63 x 70	55.00	Grade S	Bow	Safety Pin	63	70	105	267	184	152	41.05	Each	1

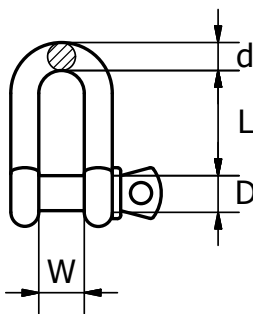


BEAVER GRADE 'M' SHACKLES

Beaver Grade 'M' Large Dee Shackles AS 2741

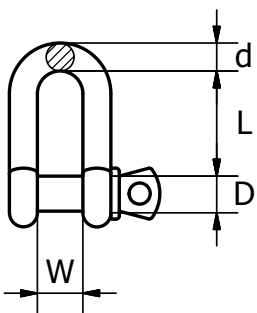
Self Colour - Capacities 0.5 - 20 tonne

Code	Size mm	W.L.L Tonne	Type	Finish	Shape	Closing Method	DIA d mm	DIA PIN D mm	Inside Width W mm	Inside Length L mm	DIA Boss F mm	Approx Weight Kg	UOM	Pack Qty
230010	10 x 13	0.50	Grade M	Self Colour	Dee	Screw	10	13	19	38	25	0.16	Each	200
230013	13 x 16	0.75	Grade M	Self Colour	Dee	Screw	13	16	28	54	32	0.35	Each	80
230016	16 x 19	1.50	Grade M	Self Colour	Dee	Screw	16	19	32	63	38	0.61	Each	50
230020	19 x 22	2.00	Grade M	Self Colour	Dee	Screw	19	22	38	73	44	1.10	Each	30
230023	22 x 25	3.00	Grade M	Self Colour	Dee	Screw	22	25	44	83	51	1.50	Each	25
230025	25 x 29	3.80	Grade M	Self Colour	Dee	Screw	25	29	51	95	57	2.14	Each	15
230028	29 x 32	5.00	Grade M	Self Colour	Dee	Screw	29	32	54	105	63	2.98	Each	10
230032	32 x 35	6.00	Grade M	Self Colour	Dee	Screw	32	35	60	114	70	3.10	Each	5
230035	35 x 38	7.00	Grade M	Self Colour	Dee	Screw	35	38	67	127	76	4.61	Each	5
230038	38 x 44	9.50	Grade M	Self Colour	Dee	Screw	38	44	70	137	89	8.01	Each	5
230042	41 x 48	11.00	Grade M	Self Colour	Dee	Screw	41	48	76	146	95	10.48	Each	3
230045	44 x 51	13.00	Grade M	Self Colour	Dee	Screw	44	51	83	156	102	12.65	Each	3
230050	51 x 57	16.00	Grade M	Self Colour	Dee	Screw	51	57	98	114	114	18.50	Each	1
230056	57 x 63	20.00	Grade M	Self Colour	Dee	Screw	57	63	108	210	127	28.00	Each	1



Beaver Grade 'M' Grade Dee Shackles AS 2741*Galvanised - Capacities 0.25 - 20 tonne*

Code	Size mm	W.L.L Tonne	Type	Finish	Shape	Closing Method	DIA d mm	DIA PIN D mm	Inside Width W mm	Inside Length L mm	DIA Boss F mm	Approx Weight Kg	UOM	Pack Qty
230306	6 x 10	0.25	Grade M	Galvanised	Dee	Screw	6	10	13	25	19	0.061	Each	600
230310	10 x 13	0.50	Grade M	Galvanised	Dee	Screw	10	13	19	38	25	0.16	Each	200
230313	13 x 16	0.75	Grade M	Galvanised	Dee	Screw	13	16	28	54	32	0.35	Each	80
230316	16 x 19	1.50	Grade M	Galvanised	Dee	Screw	16	19	32	63	38	0.61	Each	50
230320	19 x 22	2.00	Grade M	Galvanised	Dee	Screw	19	22	38	73	44	1.10	Each	30
230323	22 x 25	3.00	Grade M	Galvanised	Dee	Screw	22	25	44	83	51	1.50	Each	25
230325	25 x 29	3.80	Grade M	Galvanised	Dee	Screw	25	29	51	95	57	2.14	Each	15
230328	29 x 32	5.00	Grade M	Galvanised	Dee	Screw	29	32	54	105	63	2.98	Each	10
230332	32 x 35	6.00	Grade M	Galvanised	Dee	Screw	32	35	60	114	70	3.10	Each	5
230335	35 x 38	7.00	Grade M	Galvanised	Dee	Screw	35	38	67	127	76	4.61	Each	5
230338	38 x 44	9.50	Grade M	Galvanised	Dee	Screw	38	44	70	137	89	8.01	Each	5
230342	41 x 48	11.00	Grade M	Galvanised	Dee	Screw	41	48	76	146	95	10.48	Each	3



BEAVER COMMERCIAL GRADE SHACKLES IN BUCKETS

Beaver Commercial Hot Dipped Galvanised

Dee Shackle - Sizes 5mm - 25mm

Code	Size mm	Finish	Shape	Closing Method	Round Bucket Litres	Qty / Bucket	Weight / Bucket kg
200305P	5	Galvanised	Dee	Screw	0.75	50	0.68
200306P	6	Galvanised	Dee	Screw	0.75	50	1.24
200308P	8	Galvanised	Dee	Screw	1	40	2.2
200310P	10	Galvanised	Dee	Screw	2	30	3.36
200313P	13	Galvanised	Dee	Screw	5	30	7.0
200316P	16	Galvanised	Dee	Screw	5	20	9.18
200320P	20	Galvanised	Dee	Screw	3	6	5.80
200325P	25	Galvanised	Dee	Screw	5	6	10.2

NOT TO BE USED FOR LIFTING



Beaver Commercial Hot Dipped Galvanised

Bow Shackle - Sizes 5mm - 25mm

Code	Size mm	Finish	Shape	Closing Method	Round Bucket	Qty / Bucket	Weight / Bucket kg
205305P	5	Galvanised	Bow	Screw	0.75	50	0.36
205306P	6	Galvanised	Bow	Screw	0.75	50	1.32
205308P	8	Galvanised	Bow	Screw	1	40	2.3
205310P	10	Galvanised	Bow	Screw	2	30	3.4
205313P	13	Galvanised	Bow	Screw	5	30	6.98
205316P	16	Galvanised	Bow	Screw	5	20	9.68
205320P	20	Galvanised	Bow	Screw	3	6	5.4
205325P	25	Galvanised	Bow	Screw	5	6	10.66

NOT TO BE USED FOR LIFTING



Beaver Commercial Electro Galvanised*Dee Shackle - Sizes 5mm - 25mm*

Code	Size mm	Finish	Shape	Closing Method	Round Bucket Litres	Qty / Bucket	Weight / Bucket kg
200205P	5	Electro Galvanised	Dee	Screw	0.75	50	0.7
200206P	6	Electro Galvanised	Dee	Screw	0.75	50	1.24
200208P	8	Electro Galvanised	Dee	Screw	1	40	2.2
200210P	10	Electro Galvanised	Dee	Screw	2	30	3.24
200213P	13	Electro Galvanised	Dee	Screw	5	30	6.88
200216P	16	Electro Galvanised	Dee	Screw	5	20	8.98
200220P	20	Electro Galvanised	Dee	Screw	3	6	4.88
200225P	25	Electro Galvanised	Dee	Screw	5	6	9.86

NOT TO BE USED FOR LIFTING



PRODUCT REFERENCE GUIDE

Part Number	Page Number
200205P	17
200206P	17
200208P	17
200210P	17
200211P	17
200213P	17
200216P	17
200220P	17
200225P	17
200305P	16
200306P	16
200308P	16
200310P	16
200311P	16
200313P	16
200316P	16
200320P	16
200325P	16
205305P	16
205306P	16
205308P	16
205310P	16
205311P	16
205313P	16
205316P	16
205320P	16
205325P	16
230010	14
230013	14
230016	14
230020	14
230023	14
230025	14
230028	14
230032	14

Part Number	Page Number
230035	14
230038	14
230042	14
230045	14
230050	14
230056	14
230306	15
230310	15
230313	15
230316	15
230320	15
230323	15
230325	15
230328	15
230332	15
230335	15
230338	15
230342	15
241306P	9
241308P	9
241310P	9
241311P	9
241313P	9
241316P	9
241319P	9
241322P	9
241325P	9
241329	10
241332	10
241335	10
241338	10
241344	10
241351	10
242305P	9
242306P	9

Part Number	Page Number
242308P	9
242310MP	8
242311P	9
242313MP	8
242316MP	8
242319MP	8
242322MP	8
242325MP	8
242329	11
242332	11
242335	11
242338	11
242344	11
242351	11
242363	11
243313	12
243316	12
243319	12
243322	12
243325	12
243329	12
243332	12
244313	13
244316	13
244319	13
244322	13
244325	13
244329	13
244332	13
244335	13
244338	13
244345	13
244351	13
244357	13
244363	13



RIGGING HARDWARE

5



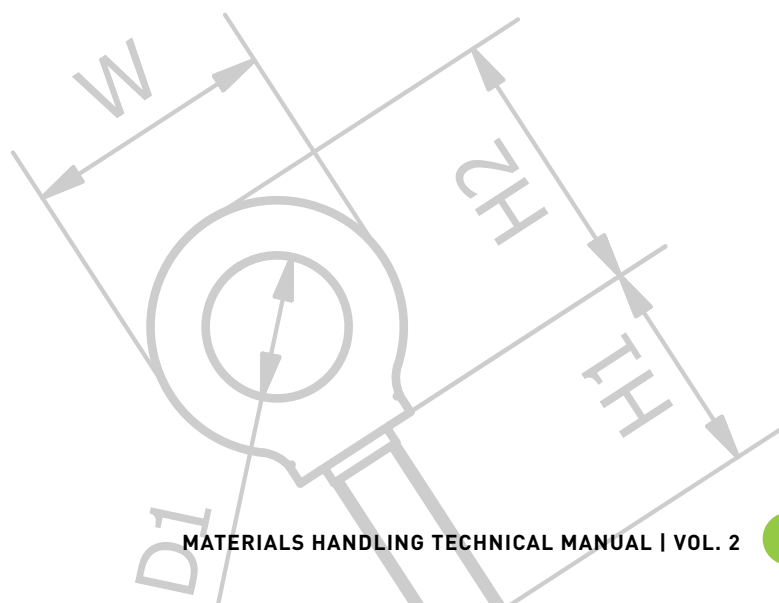
Beaver maintains a comprehensive range of rigging hardware items for the most rigorous working environment. Comprising of turnbuckles in all configurations, collared Eyebolts and eye nuts, chain split links, snap hooks, quick links and swivels we have the range to suit your work load.



Contents

RIGGING HARDWARE

BEAVER RIGGING SCREWS	4
BEAVER STUB TURNBUCKLES	7
BEAVER SUPER BUCKLES	8
BEAVER COMMERCIAL TURNBUCKLES	9
BEAVER LIFTING EYEBOLTS – COLLARED	12
BEAVER LIFTING EYEBOLTS – SHOULDERED	16
BEAVER LIFTING EYENUTS – SHOULDERED	17
BEAVER CHAIN SPLIT LINKS	18
BEAVER SNAP HOOKS, QUICK LINKS, MOORING SWIVELS	19
BEAVER MOORING SWIVELS	20
PRODUCT REFERENCE GUIDE	21



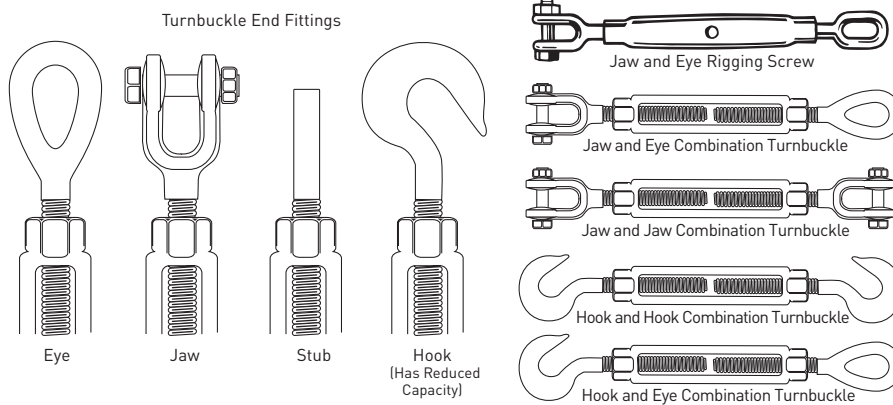
BEAVER RIGGING SCREWS



Beaver Rated Rigging Hardware

Beaver Rated Rigging Hardware complies with a number of different standards. They have a working load limit (W.L.L) and are rated for lifting applications. Beaver's range of quality rigging hardware is manufactured from the finest milling techniques and designed for both heavy industry use and general hardware applications.

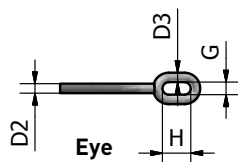
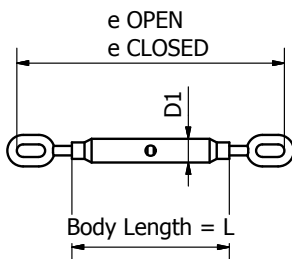
Beaver Rigging Screws and Turnbuckles



Beaver Eye and Eye Rigging Screws BS 4429

Tested Hot Dipped Galvanised

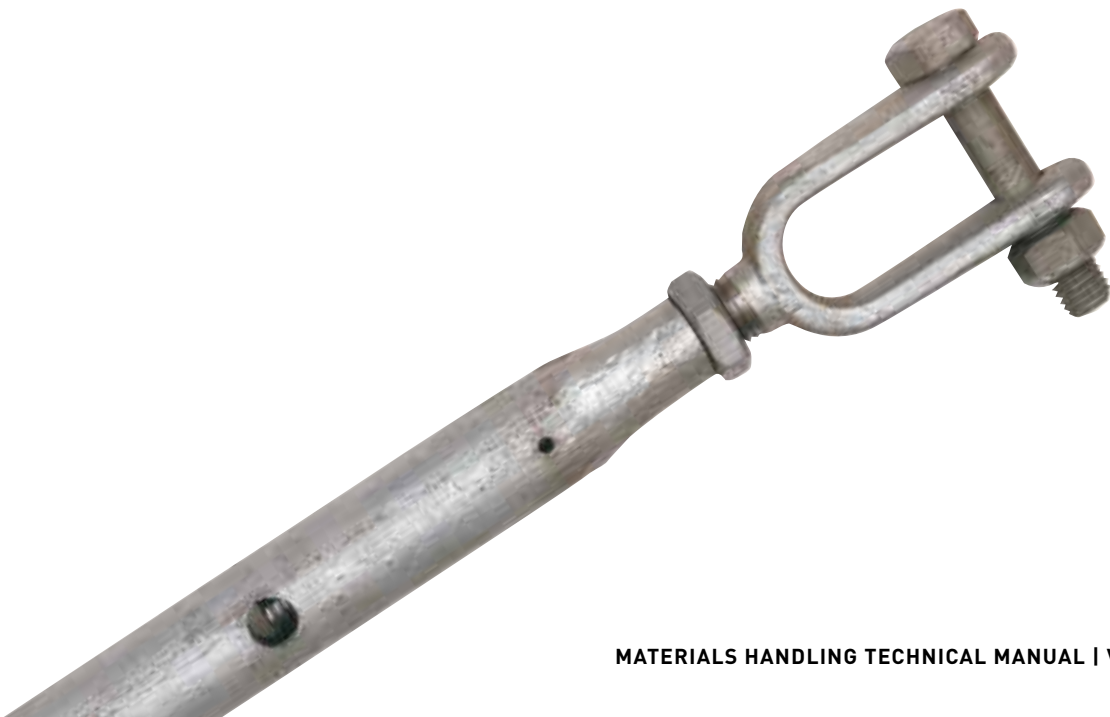
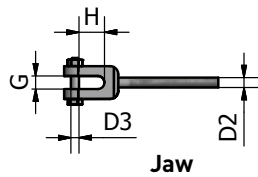
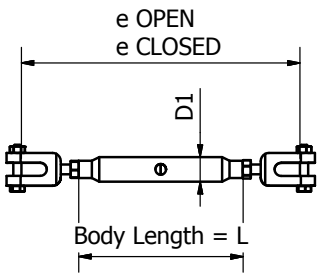
Code	Size mm	Finish	e Open mm	e Closed mm	L mm	D1 mm	D2 mm	D3 mm	G mm	H mm	W.L.L Tonne	Pack Qty	Weight Per 100 (kg)	UOM
327310	10	Galvanised	359	259	152	21	10	8	11	25	0.3	100	38	Each
327313	13	Galvanised	465	369	229	25	13	11	14	36	0.5	50	75	Each
327316	16	Galvanised	523	393	229	27	16	14	18	40	0.75	30	130	Each
327320	20	Galvanised	563	413	229	34	20	17	25	55	1.25	20	185	Each
327324	24	Galvanised	786	589	356	42	24	20	26	57	2.5	10	380	Each
327333	33	Galvanised	830	645	381	51	33	25	34	64	5	5	680	Each
327338	38	Galvanised	870	655	407	57	38	27	38	75	6	3	1000	Each



Beaver Jaw and Jaw Rigging Screws with Locknuts BS 4429

Tested Hot Dipped Galvanised

Code	Size mm	Finish	e Open mm	e Closed mm	L mm	D1 mm	D2 mm	D3 mm	G mm	H mm	W.L.L Tonne	Pack Qty	Weight Per 100 (kg)	UOM
328310	10	Galvanised	349	235	152	21	10	8	11	21	0.3	100	44	Each
328313	13	Galvanised	524	343	229	25	13	9	19	35	0.5	50	85	Each
328316	16	Galvanised	550	361	229	27	16	13	22	51	0.75	30	140	Each
328320	20	Galvanised	550	387	229	34	20	16	22	48	1.25	20	220	Each
328324	24	Galvanised	822	556	356	42	24	22	32	65	2.5	10	450	Each
328333	33	Galvanised	872	604	381	51	33	24	38	76	5	5	640	Each
328338	38	Galvanised	949	670	407	57	38	33	47	90	6	10	1260	Each
328350	50	Galvanised	977	743	407	76	48	42	51	121	10	5	2400	Each

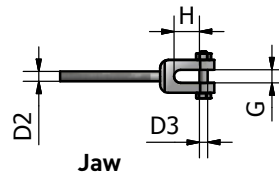
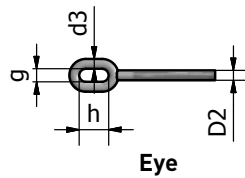
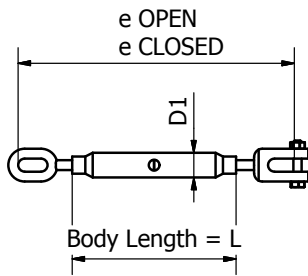


BEAVER RIGGING SCREWS (CONT'D)

Beaver Jaw and Eye Rigging Screws BS 4429

Tested Hot Dipped Galvanised

Code	Size mm	Finish	e Open mm	e Closed mm	L mm	D1 mm	D2 mm	D3 mm	G mm	H mm	g mm	h mm	d3 mm	W.L.L Tonne	Pack Qty	Weight Per 100 (kg)	UOM
329310	10	Galvanised	349	235	152	21	10	8	11	21	11	25	8	0.3	40	40	Each
329313	13	Galvanised	527	334	229	25	13	9	19	35	14	36	11	0.5	20	100	Each
329316	16	Galvanised	556	375	229	27	16	13	22	51	18	40	14	0.75	15	140	Each
329320	20	Galvanised	654	385	229	34	20	16	22	48	25	55	17	1.25	15	200	Each
329324	24	Galvanised	812	528	356	42	24	22	32	65	26	57	20	2.5	5	440	Each

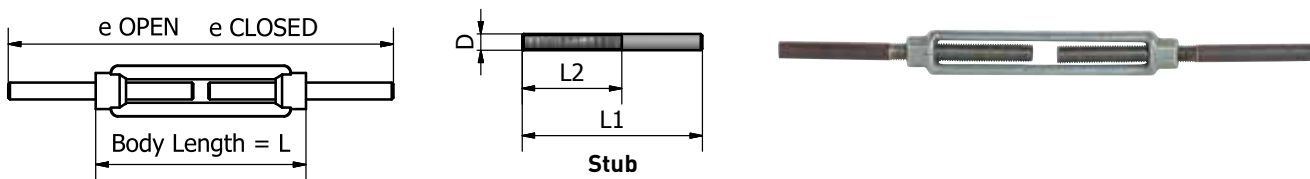


BEAVER STUB TURNBUCKLES

Beaver Forged Stub and Stub Heavy Duty Turnbuckles

Hot Dipped Galvanised Body and Black Stubs Ends to BS 716

Code	Size mm	Finish	e Open mm	e Closed mm	L mm	D mm	L1 mm	L2 mm	Pack Qty	Weight Per 100 (kg)	UOM
319013	13	Galvanised	475	335	191	12	165.5	95.5	10	80	Each
319016	16	Galvanised	495	365	204	16	174	102	10	120	Each
319020	20	Galvanised	500	365	217	20	187.5	108.5	8	200	Each
319023	23	Galvanised	535	400	232	24	205	116	4	312	Each
319025	25	Galvanised	554	400	252	33	200	126	2	550	Each
319032	32	Galvanised	680	525	255	32	260	135	3	461.76	Each

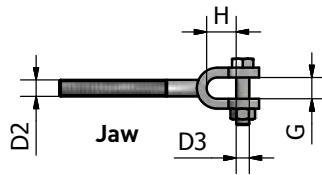
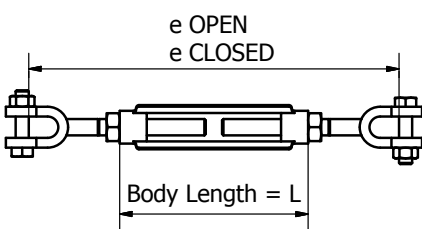


BEAVER SUPER BUCKLES

Beaver Super Buckles Jaw and Jaw with Lock Nuts. Federal Spec FF-T-791

Forged Hot Dipped Galvanised

Code	Size Inches	Finish	e Open mm	e Closed mm	L mm	D2 mm	D3 mm	G mm	H mm	W.L.L Tonne	Pack Qty	Weight Per 100 (kg)	UOM
322412	12 x 305	Galvanised	760	465	343	12.4	10	16.8	28.7	0.9	20	109	Each
322416	16 x 305	Galvanised	795	510	350	15.5	12.5	19.3	35.3	1.5	10	177.5	Each
322419	19 x 305	Galvanised	810	520	359	18.9	15.9	21.6	37.9	2.3	8	298	Each
322422	22 x 305	Galvanised	850	560	365	21.5	19.9	28.4	42.6	3.2	5	371	Each
322425	25 x 305	Galvanised	890	610	374	25.5	22.1	28.4	52	4.5	4	596.5	Each



BEAVER COMMERCIAL TURNBUCKLES



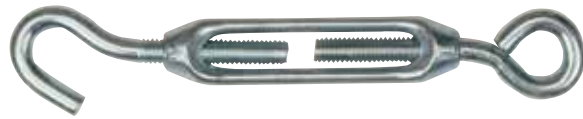
Beaver Commercial Rigging Hardware

Beaver Commercial Rigging Hardware intended use is for non-lifting applications, such as; guying and rigging of fences, pillars etc. In order to increase corrosion against the toughest environment, they are available in both hot dipped galvanised and zinc plated.

Beaver Hook and Eye Commercial Turnbuckles

Cast Electro Galvanised

Code	Size mm	Finish	Pack Qty	Weight Per 100 (kg)	UOM
320205	5	Galvanised	500	15	Each
320206	6	Galvanised	200	16	Each
320208	8	Galvanised	150	24	Each
320210	10	Galvanised	100	39	Each

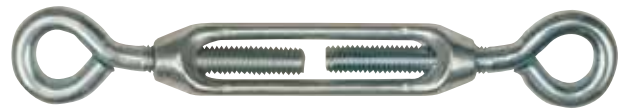


Size & Dimension will have a +10% or -10%

Beaver Eye and Eye Commercial Turnbuckles

Cast Electro Galvanised

Code	Size mm	Finish	Pack Qty	Weight Per 100 (kg)	UOM
321205	5	Galvanised	500	15	Each
321206	6	Galvanised	200	16	Each
321208	8	Galvanised	150	24	Each
321210	10	Galvanised	75	39	Each



Size & Dimension will have a +10% or -10%

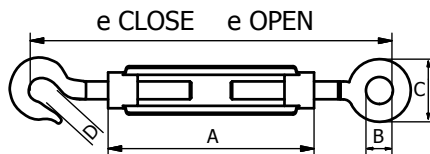
BEAVER COMMERCIAL TURNBUCKLES (CONT'D)

Beaver Hook and Eye Commercial Turnbuckles

Forged Hot Dipped Galvanised

Code	Size mm	Open mm	Closed mm	A mm	B mm	C mm	D mm	Finish	Pack Qty	Weight Per 100 (kg)	UOM
323206	6	225	153	99.5	19	9	9	Galvanised	250	8	Each
323208	8	250	161	120	22	11	11.5	Galvanised	150	14	Each
323210	10	330	220	150	27	14	14.5	Galvanised	100	26	Each
323213	13	415	265	191	34	16.5	14.5	Galvanised	40	50	Each
323216	16	520	335	250	46.5	24	19	Galvanised	25	100	Each
323220	20	595	400	290	53	27.3	25.5	Galvanised	15	168	Each
323223	22	700	440	325	66	31.5	24.5	Galvanised	8	246	Each
323225	25	720	480	337	67	32.5	26	Galvanised	8	256	Each

Size & Dimension will have +10% or -10%

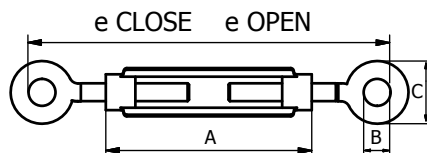


Beaver Eye and Eye Commercial Turnbuckles

Forged Hot Dipped Galvanised

Code	Size mm	Open mm	Closed mm	A mm	B mm	C mm	Finish	Pack Qty	Weight Per 100 (kg)	UOM
324206	6	200	132	98	19.5	10	Galvanised	250	8	Each
324208	8	250	166	123	22	11	Galvanised	150	14	Each
324210	10	295	183	144	25	12	Galvanised	100	26	Each
324213	13	420	285	190	13.5	19	Galvanised	40	50	Each
324216	16	545	350	250	45.5	24.5	Galvanised	25	100	Each
324220	20	630	440	285	56	30	Galvanised	15	168	Each
324223	22	-	-	-	-	-	Galvanised	8	246	Each
324225	25	720	490	345	67	32.5	Galvanised	8	256	Each

Size & Dimension will have +10% or -10%

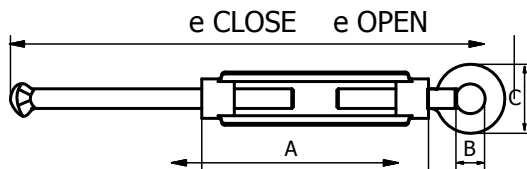


Beaver Fence Straining Screws

Forged Hot Dipped Galvanised

Code	Size mm	Open mm	Closed mm	A mm	B mm	C mm	Finish	Pack Qty	Weight Per 100 (kg)	UOM
326216	16	740	555	250	25	50	Galvanised	20	124	Each

Size & Dimension will have +10% or -10%

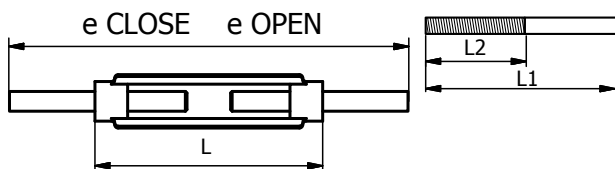


Beaver Forged Stub and Stub Commercial Turnbuckles

Hot Dipped Galvanised Body and Black Stub End

Code	Size mm	Finish	Open mm	Closed mm	L mm	L1 mm	L2 mm	Pack Qty	Weight Per 100 (kg)	UOM
325010	10	Galvanised	500	320	144	170	80	100	26	Each
325013	13	Galvanised	560	395	190	200	100	40	50	Each
325016	16	Galvanised	682	500	250	240	115	25	100	Each
325020	20	Galvanised	759	555	295	260	130	15	168	Each
325023	23	Galvanised	800	585	320	270	140	8	246	Each
325025	25	Galvanised	800	610	350	300	170	8	256	Each

Size & Dimension will have +10% or -10%

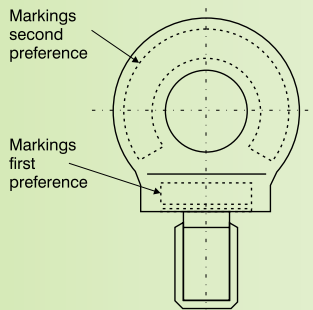


BEAVER LIFTING EYEBOLTS – COLLARED



Beaver Lifting Eyebolts And Eyenuts

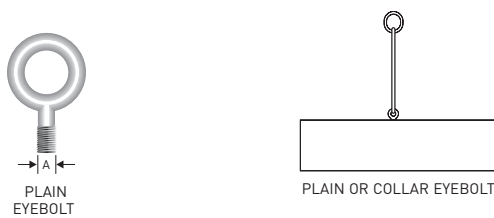
Beaver Lifting Eyebolts and Eyenuts come in a range of threads including BSW, UNC and Metric and are predominately used for lifting applications. Eyebolts and Eyenuts both carry the markings as depicted in image below.



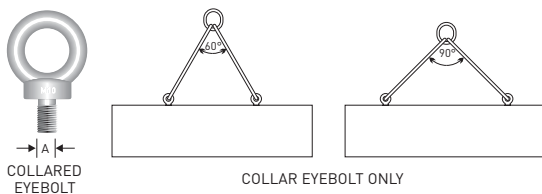
It is recommended that all Eyebolts used for lifting be of forged steel and be equipped with shoulders or collars. The plain or shoulderless eyebolt is fine for vertical loading but as soon as it is loaded at an angle it is subjected to bending and the load it can safely carry is reduced.

Beaver Lifting Eyebolts and Eyenuts

VERTICAL LIFT ONLY
PLAIN EYEBOLT IS ACCEPTABLE



ANGULAR LIFTS
COLLARED EYEBOLT ONLY



The Australian Standard covering collared Eyebolts is AS 2317-1984. The section on "Care and Use of Eyebolts" is taken from that standard.
NB: Only use rated Eyebolts for lifting.

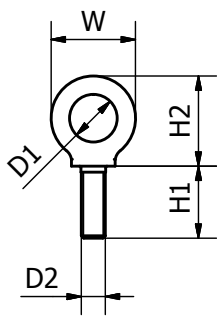
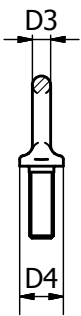
WLL for Class 3 load application as specified by AS 1418, Part 1

Nominal size of Eyebolt	WLL for Class 3 load application as specified by AS 1418, Part 1					
	Single Eyebolt		Pair of Eyebolts (see note)			
	Axial	Trunnion-type mounting	Perpendicular	Included angle 30°	Included angle 60°	Included angle 90°
M12	0.32	0.08	0.16	0.40	0.26	0.16
M16	0.63	0.16	0.32	0.79	0.50	0.32
M20	1.25	0.31	0.63	1.60	1.00	0.63
M24	2.00	0.50	1.00	2.50	1.60	1.00
M30	3.20	0.80	1.60	4.00	2.60	1.60
M36	6.00	1.30	2.60	6.30	4.00	2.50
M42	6.30	1.60	3.20	7.90	5.00	3.20
M48	8.00	2.00	4.00	10.00	6.40	4.00
M56	12.00	3.00	6.00	15.00	9.60	6.00
M64	16.00	4.00	8.00	20.00	13.00	8.00
M72	20.00	6.00	10.00	25.00	16.00	10.00
Reduction factor for single Eyebolt						
	1	0.25	0.25	0.63	0.40	0.25

Beaver Lifting Collared Eyebolts with B.S.W Thread BS 529

Conforms to AS 2317-1984

Code	Size Inches	Finish	W mm	H1 mm	H2 mm	D1 mm	D2 mm	D3 mm	D4 mm	W.L.L Tonne	Pack Qty	Weight Per 100 (kg)	UOM
358010	3/8"	Self Colour	32	17	37	15	9.53	9	21	0.25	400	5.5	Each
358013	1/2"	Self Colour	41	22	42.5	19	12.05	11	28	0.4	150	14.6	Each
358016	5/8"	Self Colour	52	28	58	24	15.88	14	35	0.8	60	30	Each
358019	3/4"	Self Colour	62	33	69	28	19.05	17	43	1.6	40	52.5	Each
358022	7/8"	Self Colour	73	39	80.5	33	22.23	20	50	2	20	90	Each
358025	1"	Self Colour	82	44	92	38	25.40	22	57	2.5	15	106	Each
358028	1-1/8"	Self Colour	92	50	103	42	28.58	25	64	3.5	10	160	Each
358032	1-1/4"	Self Colour	104	55	116	47	31.75	28	71	5	6	260	Each

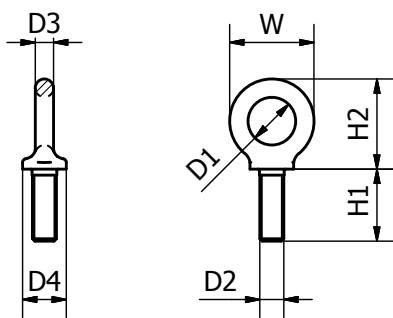


BEAVER LIFTING EYEBOLTS - COLLARED (CONT'D)

Beaver Lifting Collared Eyebolts with UNC Thread BS 529

Conforms to AS 2317

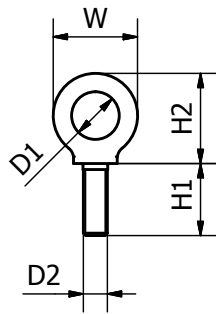
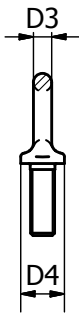
Code	Size Inches	Finish	W mm	H1 mm	H2 mm	D1 mm	D2 mm	D3 mm	D4 mm	W.L.L Tonne	Pack Qty	Weight Per 100 (kg)	UOM
360010	3/8"	Self Colour	33	9	36	15	9.53	9	22	0.25	400	6	Each
360012	1/2"	Self Colour	44	24	48	20	12.70	11	28	0.4	150	15	Each
360016	5/8"	Self Colour	52	14	58	24	15.88	14	36	0.8	60	27	Each
360019	3/4"	Self Colour	66	37	73	28.5	19.05	19	45	1.4	40	54	Each
360022	7/8"	Self Colour	77	20	84	35	22.23	21	52	2	40	85	Each
360025	1"	Self Colour	85	22	94	39	25.40	23	58	2.5	25	113	Each
360032	1-1/4"	Self Colour	106	28	117	48	31.75	29	72	5	6	237	Each
360038	1-1/2"	Self Colour	118	66	131	54	38.10	32	81	7	6	312	Each



Beaver Lifting Collared Eyebolts with Metric Threads BS 4278

"Gold" Zinc Dichromate Finish, Conforms to AS 2317

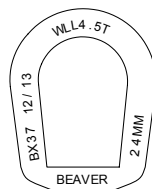
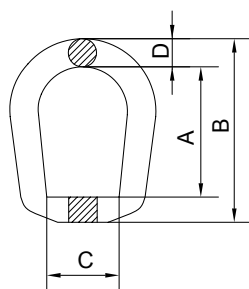
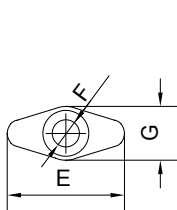
Code	Size mm	Finish	W mm	H1 mm	H2 mm	D1 mm	D2 mm	D3 mm	D4 mm	W.L.L Tonne	Pack Qty	Weight Per 100 (kg)	UOM
359008	8	Zinc Dichromate	33	18	36	15	8	18	22	0.15	400	6	Each
359010	10	Zinc Dichromate	33	18	36	15	10	18	22	0.25	180	6	Each
359012	12	Zinc Dichromate	33	18	36	15	12	18	22	0.4	110	6	Each
359016	16	Zinc Dichromate	44	23	48	20	16	24	29	0.8	80	15	Each
359020	20	Zinc Dichromate	59	32	65	27	20	32	40	1.6	45	38	Each
359022	22	Zinc Dichromate	64	35	73	30	22	34	45	1.6	30	54	Each
359024	24	Zinc Dichromate	77	40	84	35	24	42	52	2.5	10	85	Each
359030	30	Zinc Dichromate	96	51	106	44	30	52	65	4	4	162	Each



Beaver Lifting Eye Nut with Metric Thread

Self Colour Finish, Conforms to AS 2317

Code	Size mm	Finish	A	B	C	D	E	F	G	W.L.L. (tonnes)	Weight (Kg)	UOM
360024	24	Self Colour	77	126	47.5	22	89	24	53	4.5	1.47	Each

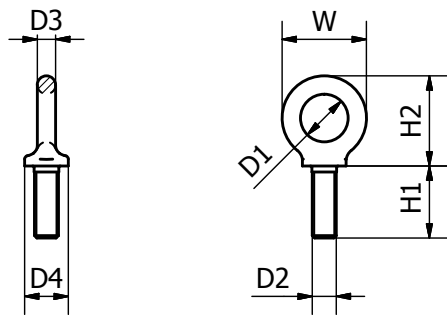


BEAVER LIFTING EYEBOLTS – SHOULDERED

Beaver Metric Shouldered Eyebolts

“Gold” Zinc Dichromate Finish, Conforms to AS 2317

Code	Size mm	Finish	W mm	H1 mm	H2 mm	D1 mm	D2 mm	D3 mm	D4 mm	W.L.L Tonne	Pack Qty	Weight Per 100 (kg)	UOM
359108	8	Zinc Dichromate	36	13	36	20	8	8	20	0.14	400	6	Each
359110	10	Zinc Dichromate	45	17	45	25	10	10	25	0.23	180	11	Each
359112	12	Zinc Dichromate	54	20.5	52	30	12	12	30	0.34	110	18	Each
359116	16	Zinc Dichromate	63	27	61	35	16	14	35	0.7	80	28	Each
359120	20	Zinc Dichromate	72	30	70	40	20	16	40	1.2	50	45	Each
359122	22	Zinc Dichromate	81	35	80	45	22	18	45	1.5	30	67	Each
359124	24	Zinc Dichromate	90	36	90	50	24	20	50	1.8	20	87	Each
359130	30	Zinc Dichromate	108	45	110	60	30	24	65	3.6	4	166	Each
359136	36	Zinc Dichromate	126	54	130	70	36	28	75	5.1	4	265	Each

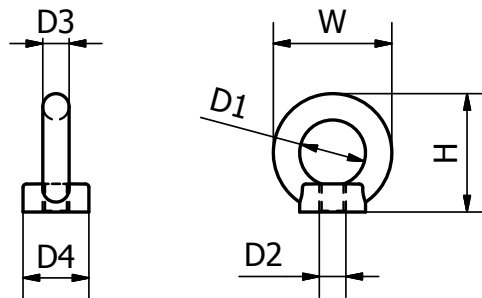


BEAVER LIFTING EYE NUTS – SHOULDERED

Beaver Metric Shouldered Eye Nuts to DIN 582

“Gold” Zinc Dichromate Finish

Code	Size mm	Finish	W mm	H mm	D1 mm	D2 mm	D3 mm	D4 mm	W.L.L Tonne	Pack Qty	Weight Per 100 (kg)	UOM
359208	8	Zinc Dichromate	36	36	20	8	8	20	0.14	400	5	Each
359210	10	Zinc Dichromate	45	45	25	10	10	25	0.23	180	9	Each
359212	12	Zinc Dichromate	54	52	30	12	12	30	0.34	110	16	Each
359216	16	Zinc Dichromate	63	61	35	16	14	35	0.7	80	24	Each
359220	20	Zinc Dichromate	72	70	40	20	16	40	1.2	50	36	Each
359222	22	Zinc Dichromate	81	80	45	22	18	45	1.5	30	58	Each
359224	24	Zinc Dichromate	90	90	50	24	20	50	1.8	20	72	Each



BEAVER CHAIN SPLIT LINKS

Beaver Chain Split Links

Electro Galvanised

Code	Size mm	Finish	Pack Qty	Weight Per 100 (kg)	UOM
420103	3.5	Electro Galvanised	5000	0.41	Each
420105	5	Electro Galvanised	1500	1.72	Each
420106	6	Electro Galvanised	800	3	Each
420108	8	Electro Galvanised	400	6.9	Each
420110	10	Electro Galvanised	200	12	Each
420113	13	Electro Galvanised	120	23	Each



Beaver Chain Split Links

Hot Dipped Galvanised

Code	Size mm	Finish	Pack Qty	Weight Per 100 (kg)	UOM
420303	3.5	Galvanised	5000	0.41	Each
420305	5	Galvanised	1500	1.72	Each
420306	6	Galvanised	800	3	Each
420308	8	Galvanised	400	6.9	Each
420310	10	Galvanised	200	12	Each
420313	13	Galvanised	120	23	Each



BEAVER SNAP HOOKS, QUICK LINKS, MOORING SWIVELS

Beaver Snap Hooks

Code	Size mm	Finish	Pack Qty	Weight Per 100 (kg)	UOM
425204	4	Electro Galvanised	2500	1.4	Each
425205	5	Electro Galvanised	1400	1.6	Each
425206	6	Electro Galvanised	1000	2.7	Each
425207	7	Electro Galvanised	700	4.4	Each
425208	8	Electro Galvanised	400	6.5	Each
425210	10	Electro Galvanised	200	12.7	Each



Beaver Quick Links

Code	Size mm	Finish	Pack Qty	Weight Per 100 (kg)	UOM
420603	3.5	Galvanised	3000	0.908	Each
420605	5	Galvanised	1250	2.27	Each
420606	6	Galvanised	800	3.632	Each
420608	8	Galvanised	400	8.172	Each



BEAVER MOORING SWIVELS

Beaver Commercial Mooring Swivels

Eye and Bow Type

Code	Size mm	Finish	Pack Qty	Weight Per 100 (kg)	UOM
330306	6	Galvanised	250	8.4	Each
330308	8	Galvanised	150	16.2	Each
330310	10	Galvanised	80	27.8	Each
330313	13	Galvanised	35	48.3	Each
330316	16	Galvanised	25	85.0	Each
330320	20	Galvanised	12	134.1	Each
330323	23	Galvanised	10	200.0	Each
330325	25	Galvanised	5	315.0	Each
330328	28	Galvanised	5	640.0	Each



Beaver Commercial Chain Swivels

Bow and Bow Type

Code	Size mm	Finish	Pack Qty	Weight Per 100 (kg)	UOM
335306	6	Galvanised	250	6.0	Each
335308	8	Galvanised	150	13.5	Each
335310	10	Galvanised	80	25.0	Each
335313	13	Galvanised	35	56.0	Each
335316	16	Galvanised	25	120.0	Each
335320	20	Galvanised	12	180.0	Each
335323	23	Galvanised	10	250.0	Each
335325	25	Galvanised	5	410.0	Each



PRODUCT REFERENCE GUIDE

Part Number	Page Number
319013	7
319016	7
319020	7
319025	7
319032	7
320205	9
320206	9
320208	9
320210	9
321205	9
321206	9
321208	9
321210	9
322412	8
322416	8
322419	8
322422	8
322425	8
323206	10
323208	10
323210	10
323213	10
323216	10
323220	10
323223	10
323225	10
324206	10
324208	10
324210	10
324213	10
324216	10
324220	10
324223	10
324225	10
325010	11
325013	11

Part Number	Page Number
325016	11
325020	11
325023	11
325025	11
326216	11
327310	4
327313	4
327316	4
327320	4
328310	5
328313	5
328316	5
328320	5
328324	5
328333	5
328338	5
328350	5
329310	6
329313	6
329316	6
329320	6
329325	6
330306	20
330308	20
330310	20
330313	20
330316	20
330320	20
330323	20
330325	20
330328	20
335306	20
335308	20
335310	20
335313	20
335316	20

Part Number	Page Number
335320	20
335323	20
335325	20
358010	13
358013	13
358016	13
358019	13
358022	13
358025	13
358028	13
358032	13
359008	15
359010	15
359012	15
359016	15
359020	15
359022	15
359024	15
359030	15
359108	16
359110	16
359112	16
359116	16
359120	16
359122	16
359124	16
359130	16
359136	16
359208	17
359210	17
359212	17
359216	17
359220	17
359222	17
359224	17
360010	14

Part Number	Page Number
360012	14
360016	14
360019	14
360022	14
360024	15
360025	14
360032	14
360038	14
420103	18
420105	18
420106	18
420108	18
420110	18
420113	18
420303	18
420305	18
420306	18
420308	18
420310	18
420313	18
420603	19
420605	19
420606	19
420608	19
425204	19
425205	19
425206	19
425207	19
425208	19
425210	19



NOTES
