



Workshop Equipment Catalogue 2012



ALEMLUBE

WHEEL SERVICE EQUIPMENT TO SUIT YOUR REQUIREMENTS

With so many different types of rims and tyres currently available on our motor vehicles in Australia, it is imperative that you have the correct balancer, aligner, and tyre changer to suit your particular needs.

Utilising the right wheel service equipment in your business will help keep tyres on the road for a longer period of time and help to ensure customer satisfaction.

Alemlube imports premium quality wheel service equipment from Ravaglioli SPA (known as RAV), an Italian manufacturer. The equipment imported from RAV is suitable for large to medium tyre shops, car dealerships, technical colleges and large workshops.

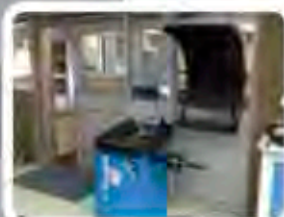
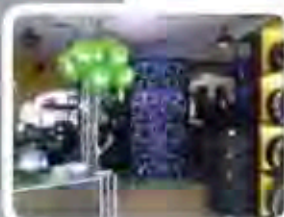
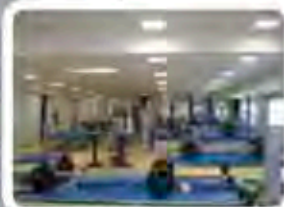
Alemlube also imports premium quality Tyre Changers and Balancers from UNITE, a leading Chinese automotive workshop equipment manufacturer. The UNITE brand is suitable for all general mechanical workshops and small tyre shops.

Importantly, Alemlube offers free, no obligation advice to assist your decision making process, so that you can be confident in the knowledge that the correct model has been chosen.

Both RAV and UNITE manufacture a comprehensive range of wheel service equipment and accessories, and our Product Manager ensures that the correct models are brought into Australia.

In addition, Alemlube stocks accessories and spare parts and employs trained technicians in every state and territory.

Branch offices are located in: New South Wales, Victoria, Tasmania, Queensland, South Australia, Western Australia and New Zealand.



THE ALEMLUBE NETWORK

With offices in Sydney, Melbourne, Brisbane, Perth, Adelaide, Mackay and Launceston, plus a National Network of trained Distributors, Alemlube can provide expert technical and sales service with installation and service, nation wide.



Alemlube Introduction	2
Contents	3
RAV Introduction	4 - 5
RAV Vehicle Hoists	6 - 8
RAV Commercial Vehicle Hoists	9 - 10
RAV Tyre Changers	11
RAV Tyre Changer Accessories	12
RAV Wheel Balancers	13
RAV Wheel Balancer Accessories	14
RAV Wheel Aligners	15
RAV Wheel Aligner Accessories	16
RAV Commercial Vehicle Tyre Changers	17
RAV Commercial Vehicle Tyre Changer Accessories	18
RAV Commercial Vehicle Truck Balancers & Accessories	19
RAV Commercial Vehicle Aligners & Accessories	20
Ever Eternal Introduction	21
Everlift Vehicle Hoists	22 - 25
UNITE Tyre Changers	26 - 27
UNITE Wheel Balancers	28
Manatec Wheel Aligners	29
On Car Servicing Equipment	30 - 31
Fume Extraction Equipment	32 - 33
Waste Oil Drainers/ Extractors	34 - 36
Spill Containment Equipment	37 - 38
Workshop Design & Fitouts	39 - 42
Maintenance Plan	43
Contacts	44



Ravaglioli S.p.A. is one of the world's top-ranking companies in the garage equipment industry. They are Europe's leading manufacturer of lifts and among the major manufacturers of tyre and test equipment (vehicle testing and wheel alignment)



The company was established in 1958 as a manufacturer of equipment for the automotive service and repair industry. The headquarters was originally in Bologna Italy, in a region where automotive manufacturing is concentrated.



In 1981 the company moved to its current headquarters at Pontecchio Marconi where, besides better production facilities, it found a suitable need for more office space for their management, technical and administration team.

New showroom, meeting, and training facilities were also added.



Subsequent expansion and modernisation over an area of 860,000 sq. ft. provided the company with a working area of 345,000 sq. ft.



In 1997, a new production unit was set up at Ostellato (Ferrara), on a 650,000 sq. ft area.

The production lines of tyre changers and balancers are located in this plant, as well as the main metal working division and the hydraulic pistons division.

For years a leader in the Italian market, Rav's sales expansion abroad has undergone constant growth.

The company's current export share is 70%, with sales in over 110 Countries, in all continents.

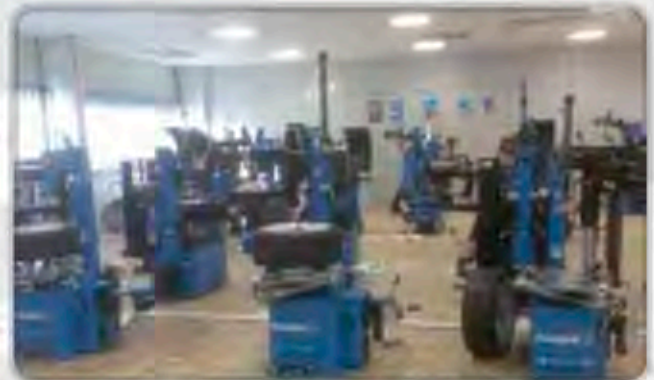
Besides the Italian headquarters, Ravaglioli also has branches in: France - Paris, Germany - Freising, Spain - Tarragona, in the UK and in the USA, near New York.

Ravaglioli is sure about the quality and full compliance of its products; their company places its knowledge at the service and for the safety of users.

The "mission" of Rav SpA, defined by Company Management in the "Quality Policy" document, does in fact envisage that Company activities be centred on Customer satisfaction through the supply of safe and reliable products able to meet the very latest needs of operators and Customers.



The over 300,000 lifts, of the "two-post" type alone, sold throughout the world, attest to our standard of specialisation and the lead role we play in the industry.



Another crucial part of RAV's product range is the tyre service equipment: this is managed by a specific organisation both during design, testing, and production.



Since 1998 a new unit is operational, for the production of wheel alignment and test lanes. The plant is located in Trana, on the outskirts of Turin, on a 110.000 sq.ft area.



The vehicle testing sector is the result of RAV's strong commitment and tremendous success over recent years.

KPH370-42K

RAV 2 Post 4.2T Hydraulic Hoist

- ▶ Lifting capacity of 4200kg
- ▶ 2-stage short arms and 3-stage long arms
- ▶ Double lifting cylinders - one per column
- ▶ Maximum lifting heights of 4175mm or 4075mm
- ▶ Safety valve prevents overloading
- ▶ Self-controlled lowering speed
- ▶ Automatic locking and unlocking
- ▶ Mechanical safety latch automatically engages ensuring maximum safety
- ▶ Switch is directly connected to the motor, therefore no transformers, no connectors & no thermo magnetic switches
- ▶ Fully complies with Australian standards

KPH370-42LIK suitable for longer wheel based vehicles such as vans also available



KPX337WK

3.2 Tonne 2 Post Baseless Hoist

- ▶ Superior lifting height of over 2 metres
- ▶ The lift & safety nuts have a high resistance to wear and guarantee greater safety
- ▶ Automatic and permanent nut lubrication system guarantees efficient lubrication during hoist lift and descent
- ▶ A symmetric arms facilitate easy and quick access to the inside of the car
- ▶ Low profile arms and very low adjustable height lift pads
- ▶ Electro-mechanical design guarantees a long service life, minimal maintenance and maximum workplace safety



KPS327H

3.2 Tonne Hoist With Base

- ▶ Superior lift capacity of 3.2 tonne
- ▶ Superior lifting height of over 2 metres
- ▶ Low profile arms and very low adjustable height lift pads
- ▶ Three stage shorter arms facilitate easy asymmetric loading of large vehicles
- ▶ Electro-mechanical design guarantees a long service life, minimal maintenance and maximum workplace safety
- ▶ Compliant to Australian Safety Standards
- ▶ Recently upgraded model facilitates faster hoist ascent and descent

RAV4401/RAV4402

4 Tonne 4 Post Vehicle Hoists

- ▶ 4.0 tonne capacity
- ▶ Adjustable platforms to accommodate varying vehicle widths
- ▶ Automatic mechanical back up safety devices with pneumatic release allow for stationary operation with loaded cables
- ▶ Immediately triggered safety stud devices operate in the event of a cable slackening or failing
- ▶ An automatic anti-toe trapping alarm during the final stages of vehicle hoist descent supplied standard

RAV4402 wheel alignment hoist with front recesses and rear slip plates also available



RAV518NL

3 Tonne Electro-Hydraulic Scissor Lift

- ▶ Ideal for space saving in small, medium or large workshops
- ▶ No cross rails or torsion bars between the lifting platforms ensures clear access to the underside of the vehicle
- ▶ A patented synchronisation device in the hydraulic system assures equal lifting platform height regardless of vehicle weight distribution
- ▶ Controlled speed during the initial lifting and final lowering phase of the hoist supplied standard
- ▶ All pivot points manufactured with lubricating bushes ensuring a long service life



RAV4800

8Tonne Electro-Hydraulic 4 Post Lift with Flat Platform

- ▶ Large clearances between the posts enable easy loading of wide vehicles
- ▶ Ideal capacity for larger type vans and medium size trucks
- ▶ Main hydraulic cylinder is located inside the fixed platform providing it with maximum protection
- ▶ High resistance, galvanized and pre-stretched metal cables
- ▶ Large diameter pulleys with self-lubricating and maintenance free bushes
- ▶ Ideally suited for use in minesite, council, contractor and truck workshops



RAV4650

6.5Tonne Electro-Hydraulic 4 Post Lift with Flat Platform

- ▶ Large clearances between the posts enable easy loading of wide vehicles
- ▶ Ideal capacity for larger type vans and medium size trucks
- ▶ Main hydraulic cylinder is located inside the fixed platform providing it with maximum protection
- ▶ High resistance, galvanized and pre-stretched metal cables
- ▶ Large diameter pulleys with self-lubricating and maintenance free bushes
- ▶ Ideally suited for use in minesite, council, contractor and truck workshops





RAV232NL

4 Post Column Lift

The RAV232NL 22 tonne column lift is the ideal lifting system for buses, B-doubles, mobile cranes and workshops where space is an issue and workshop flexibility is required. Fully mobile with indoor models available, other models with capacities ranging from 3.0 tonne up to 10.0 tonne per column are available in the Ravaglioli range.

Hydraulic towing jack available on request.

- ▶ Large and solid base for maximum stability under load
- ▶ Lifting spindles in rolled steel with bronze main nut and safety nut
- ▶ Master column with a main control panel and slave column with a secondary control panel and emergency stop button combine to effect the vehicle's lifting and descent

RAV234NL

6 Post Column Lift

The RAV234NL 22 tonne column lift is the ideal lifting system for buses, B-doubles, mobile cranes and workshops where space is an issue and workshop flexibility is required. Fully mobile with indoor models available, other models with capacities ranging from 3.0 tonne up to 10.0 tonne per column are available in the Ravaglioli range.

Hydraulic towing jack available on request.

- ▶ Large and solid base for maximum stability under load
- ▶ Lifting spindles in rolled steel with bronze main nut and safety nut
- ▶ Master column with a main control panel and slave column with a secondary control panel and emergency stop button combine to effect the vehicle's lifting and descent



G74411.24

Automatic Tyre Changer

- ▶ Heavy duty structure guarantees proper working conditions at all times
- ▶ Rigid self-centering chuck manufactured from laser cut steel has two way rotation, high torque, wide clamping range and high clamping force
- ▶ Bead breaker features a galvanised cylinder with simple operation
- ▶ The jointed and shaped blade of the bead breaker facilitates bead breaking without damaging the rim or tyre
- ▶ The tubeless tyre inflation system is activated by a single pedal command with two positions

Also available:

G7441.20 - Automatic 20" tyre changer

G74411.20 - Automatic 20" tyre changer with tubeless tyre inflation device

G74411.20-A - Automatic 20" tyre changer with mount/demount device and rotating arm (includes assist arm **PLUS83**)

G74411.24-A - Automatic 24" tyre changer with mount/demount device and rotating arm (includes assist arm **PLUS83**)

Tyre changers are fitted with 3HP motors, 240V motors are available on request



▶ G74411.24-A



PLUS83

Assist arm mount/demount device and rotating arm



▶ G7040.18



▶ G7645I.26

G7645I.26

Automatic Tyre Changer

- ▶ High rear frame gives extra stiffness and compactness to the vertical post, which can be easily tilted
- ▶ The extra height of the vertical post and tool shaft allow easy servicing to any type of tyre to a maximum of 14" (355 mm) width
- ▶ Tool shaft has increased rigidity due to its tilted construction and allows for easier operation with extra-large tyres

G7645I.26-A - Automatic 26" tyre changer with mount/demount device and rotating arm (includes assist arm **PLUS83**)

G7040.18

Semi-Automatic Tyre Changer

- ▶ For cars, motorcycles and light commercial vehicles
- ▶ Optimised construction to obtain the best price related ratio
- ▶ Self-centering chuck manufactured from laser-cut steel
- ▶ Special surface treatment provides longer life of the tool and minimises friction on the tyre

G7040.18 (240V) - Semi-automatic 18" tyre changer with 240V motor



G84A4
Bead Breaker Adaptor for Motorbike Wheels



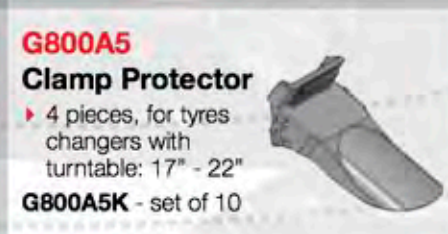
G800A11
Bead Breaker Protection Kit
▶ For all models except bike



G84A13
Bead Locking Clamp



G800A8K
Tool Protection Kit
▶ 2 pieces for G870-875-880 and with tool G88A1
G800A8K - set of 10



G800A5
Clamp Protector
▶ 4 pieces, for tyres changers with turntable: 17" - 22"
G800A5K - set of 10



G1000A13
Tyre Level Protection
G1000A13K - set of 50



G84A17
Tool Protection Kit
▶ 2 pieces for G800-820-840 non S version
G84A17K - set of 10



G800A6
Clamp Protector
▶ 4 pieces, for tyres changers with turntable: 24" - 28"
G800A6K - set of 10



G84A21
Fixed Motorbike Wheel Clamps
▶ For all models with chucking sizes from 17" - 22" (+5 from outside)



PLUS80
Mount/Demount Device
▶ For semi-automatic tyre changers



PLUS83
Mount/Demount Device
▶ For automatic tyre changers

PLUS91 - Left mount rotating bead push arm used on G840 except L version

G2.119H

Electronic Wheel Balancer

- ▶ Entry level model of the motorised range, the machine offers great value for money and occupies a very limited space. While an entry level model, it gives professional performances
- ▶ The particular cover design reduces the overall machine dimensions and allows the balancing of wheels up to 1016mm (40") diameter, with the cover closed
- ▶ Auto A&D data entry and low rotation speed
- ▶ Features backlit graphic LCD display and multifunction Interactive keys
- ▶ Hidden weight mode allows the operator to hide wheel weights behind the spoke
- ▶ Static mode ideal for motorbikes



▶ G2.119H

G3.128H

Wheel Balancer

- ▶ Professional machine, which offers all the features requested by the most demanding operators
- ▶ Maximum precision granted by the automatic measurement of distance and diameter and by the automatic ALU S and PAX programs
- ▶ Quick balancing process thanks to the automatic start when the cover is lowered and automatic stop of the wheel in the external unbalanced position.
- ▶ Easy operation thanks to interactive inputs, which guide the operator during all the phases of the balancing process

G3.128H-G - Same per **G3.128H** with calliper for automatic measurement of rim width (includes auto width arm **GAR213**)



▶ G3-128H



GAR213

Calliper

- ▶ For automatic measurement of rim widths can be mounted on any automatic data entry balancer

G4.140H

Wheel Balancer

- ▶ Professional machine, offering all the features requested by the most demanding operators
- ▶ Maximum precision granted by the automatic measurement of distance and diameter and by the automatic ALU S and PAX programs
- ▶ Easy operation thanks to interactive inputs, which guide the operator during all the phases of the balancing process
- ▶ Quick balancing: automatic start when the cover is lowered and automatic stop in the external unbalanced position
- ▶ Automatic rotation to the internal unbalance position



▶ G4.140H



GAR112
Cone

- ▶ 95mm - 124mm
- ▶ Used for off road vehicles



GAR113
Cone

- ▶ 113mm - 174mm
- ▶ Used for vans and light commercial vehicles



GAR218
Pneumatic Wheel Lift

- ▶ Allowing the operator to easily lift a heavy wheel onto the wheel balancer



▶ GAR181

GAR181
Universal Flange

- ▶ For motorbikes

GAR181A
Brush Kit

- ▶ For special motorbikes rims

GAR181A1
Gauge Extension

- ▶ Distance gauge extension for motor bikes



GAR213
Calliper

- ▶ Automatic measurement tool



GAR131
Universal Flange

- ▶ Used for vans and light commercial vehicles



Includes 1 set of standard wheel clamps, trolley, turntables & rear slip plate

RAVTD1780WS

Total Drive Bluetooth Wheel Aligner

- ▶ 8CCC wheel aligner (Bluetooth) with turntables, quick tyre wheel clamps
- ▶ Top of the range model
- ▶ Data Bluetooth transmission allows maximum mobility between different working positions
- ▶ Can be used with electronic turntables, requested by some car manufacturers for the automatic reading of maximum steering
- ▶ This model allows the operator to measure wheel run out by moving the vehicle equivalent to 180 wheel rotation without lifting the car
- ▶ A special Spoiler program is automatically activated, through a simplified practical procedure, to perform the measurements on sport and tuned car bodies
- ▶ Includes a set of 4 quick clamps for a fast and accurate alignment

RAVTD1760WS - 6CCC wheel aligner (Bluetooth) includes 1 set of quick type wheel clamps, trolley, turntables and rear slip plate

RAVTD5060WD

Entry Level Wheel Aligner

- ▶ Complete with 4 measuring heads equipped with 6 infra-red CCD sensors makes it possible to measure all steering angles.
- ▶ The wheeled control unit houses the data processing and management computer, TFT monitor, printer, keyboard and battery charger
- ▶ Data bank with more that 20,000 vehicle data sheets already entered and further blank sheets to be filled in as and when required
- ▶ Includes a set of 4 quick clamps for a fast and accurate alignment

RAVTD5040WD - Entry level 4CCD, complete with 2 front measuring heads equipped with 4 infra-red CCD sensors and 2 rear infra red transmitter, includes 1 set of standard wheel clamps, trolley, turntables



Includes 1 set of standard wheel clamps, trolley, turntables & rear slip plate



14000
Plastic Grippers



R110A7
Turntables

- ▶ 1 set
- ▶ 310mm



R108A2
Display Trolley with Hooks
(a frame with castors)



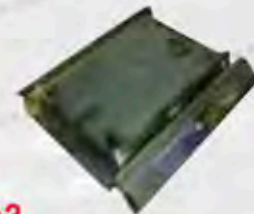
RAVTDA35/E
Quick Wheel Clamp

- ▶ Pair self centering 12" - 24"



STDA47
Wheel Clamp Extensions

- ▶ 1 set wheel clamp extensions (brings it up to 23")
- ▶ 1 set - 2 wheel clamps



R110A2
Slip Plates for Rear Wheel



RAV-WCWM4
Wall Mounting Brackets

- ▶ For TDA35 wheel clamps
- ▶ 1 set - 4 brackets

RAVTDA33
Wheel Clamp

- ▶ 1 set standard 10" - 19"
- ▶ 1 set - makes 2 wheel clamps



RAV-WCSS
Floor Mounted Stand

- ▶ 1 set - 4 safety stands



RAVTDA95
Wheel Clamp

- ▶ Pair standard 12" - 24"
- ▶ 1 set - makes 2 wheel clamps



RAV-RSK4
Spacer Kit

- ▶ For RAV4402 Hoist and R110A7 turntables
- ▶ 2 x 45mm & 2 x 115mm spacers



RAVTDA67
Emergency Charging Cable

- ▶ 1 x 10 metre cable



**GTB16
Tyre Changer**

- ▶ A new concept in the truck tyre changing field: compact, versatile, specially designed to best operate on tubeless wheels
- ▶ Extremely fast: simultaneous bead loosening operation
- ▶ The chucking unit is able not only to turn clockwise and anti-clockwise, but also to move up and down and in and out
- ▶ These horizontal and vertical movements help to grip the wheel, and to lift and tilt it among the two

**G96
Truck Tyre Changer**

- ▶ Tyre-Changer for commercial vehicles wheels from 12" to 26"
- ▶ In order to avoid any damage to the rim, the hydraulic pressure of the rim clamping chuck is adjustable
- ▶ The operating dimensions of the rim clamping unit and of the head-tool carriage allow the tyre changer to operate on a whole range of wheels, including super-single



**G9156.11
Tyre Changer**

- ▶ Electro-hydraulic tyre changer for trucks, agricultural and earth-moving vehicles
- ▶ The dimensions and work strokes are such as to ensure maximum efficiency for the entire range of tyres
- ▶ The two-speed rotation chucking table can accommodate rims up to 42" without extensions
- ▶ It also features a clamping force adjustment device





G108A2
Jaws for Alloy Wheels

The image shows a collection of metal jaws and pins. There are four larger, L-shaped metal jaws with a central slot. There are also four smaller pins with rounded ends. The parts are arranged on a light-colored surface with some faint markings.



G90A3
Bead-locking Clamp
▶ For earth-moving wheels

G90A6
Bead-locking Clamp
▶ For alloy rims





GTL2.120H

Truck Wheel Balancer

- ▶ Quick balancing, with wheel lift to reduce back injuries
- ▶ An electro-pneumatic brake holds the wheel in position
- ▶ Automatic rotation to the internal unbalance position
- ▶ Cones suitable for light trucks up to 174mm
- ▶ **GTL2-120HC** - As shown but with larger cones/adapters up to 281mm



GTL4.128HC

Truck Wheel Balancer

- ▶ These versatile machines are designed for easy, fast and accurate balancing of car and commercial vehicle wheels
- ▶ Microprocessor controlled with self-calibration and self-diagnostics
- ▶ Specific balancing programs for static, dynamic and ALU wheels (light alloy)
- ▶ One single spin with low rotation speed provides all the values
- ▶ Display readout of out of balance values and the related position on the wheel
- ▶ Wheel diameter and width in inches or millimeters
- ▶ Unbalance readout in grams or ounces
- ▶ Complete with cones for trucks (Ø from 202 - 221mm and 281mm)



GAR171 / GAR172 / GAR173

Truck Adaptor

- ▶ **GAR171** (3 x 170, 186, 205, 222, 245)
- ▶ **GAR172** (4 x 275, 285)
- ▶ **GAR173** (5 x 225, 286, 335)



GAR122

Truck Adaptor

- ▶ Spacer for **GAR122**

▶ RAVTD5040T-C



RAVTD5040T-C Entry Level Wheel Aligner

- ▶ Complete with two front measuring heads equipped with 4 infra-red CCD sensors and two rear infra-red transmitters, makes it possible to measure all steering angles
- ▶ Data bank with more that 20,000 vehicle data sheets already entered and further blank sheets to be filled in as and when required
- ▶ Customer data bank for recording 20,000 jobs with search by customer name or vehicle registration plate number capabilities
- ▶ Summary and comparison of diagnosis/repair values on a single screen
- ▶ The wheeled control unit houses the data processing and management computer, TFT monitor, printer, keyboard and battery charge

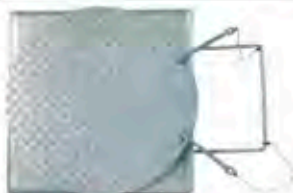
RAVTD8060TBTH-C Commercial Vehicle Aligner

- ▶ Specific truck alignment software developed with and for truck alignment specialists
- ▶ Measurement of multiple axle vehicles, thanks to an extremely easy-to-follow procedure.
- ▶ Faster and more reliable data transmission through Bluetooth (radio can be a problem on large vehicles).
- ▶ Simpler and more modern technology (most recent design compared to major competition) grants better reliability and less down-time for the end user
- ▶ Double inclinometer to allow caster ADJUSTMENT without steering
- ▶ We recommend the new no run out clamps **STDA92** enabling to skip run-out compensation procedure

BCCD also available



▶ RAVTD8060TBTH-C



STDA29 Turntable

- ▶ Set of 2 commercial turntables - diameter 476 mm - capacity 7.000 kg each



STDA44 Turntable

- ▶ Graduated scale for truck



STDA92 No Run-out Clamps

- ▶ Improves accuracy by 15-20 mins per truck



STDA49 Adaptor for Truck Alignment



STDA50 Rear Focal Points

- ▶ For **STDA49** with battery charger transformer



“ As a leading manufacturer of vehicle lifts in China, Ever-Eternal is devoted to supplying high quality products. The highly efficient & precision facilities and experienced technical team with a philosophy of market-driven service, make Ever-Eternal dynamic and professional. ”

Ever-Eternal (EE) was established in 2003, based in Shanghai. Alemlube's own Everlift brand is manufactured in the vehicle lift production facility located in Wujiang, about one hour's drive from Shanghai, with an area of 35,000 sq metres. EE started selling into Europe in 2004 and has participated in international automotive trade shows ever since.

Based on leading design and innovation, in addition to a global customer network, EE has received the recognition of "China Top Ten Garage Equipment Brand", "Enterprising Company" and "Top Five Fine Products in 2010".

Everlift Production Process

1. Plasma Cutting



2. Saw Cutting



3. Punching



4. Folding / Cutting



5. Welding



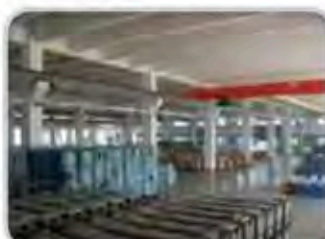
6. Powder Coating



7. Assembling & Testing



8. Finished Products



9. Container Loading



E2040CFN

Everlift - 4.0T Clearfloor Two Post Lift

- ▶ Lifting capacity of 4000 kg
- ▶ Lifting height of 1900mm
- ▶ Lifting time of 55 seconds
- ▶ 115% dynamic loading and 150% static loading test
- ▶ 24V ABS control box
- ▶ 3-stage arm structure to accommodate small vehicles
- ▶ 2.2KW aluminium motor



E2050CFN

Everlift - 5.0T Clearfloor Two Post Lift

- ▶ Lifting capacity of 5000kg
- ▶ Lifting height of 1900mm
- ▶ Minimum height of 110mm
- ▶ Width between columns of 3342mm
- ▶ Post height of 4498mm
- ▶ Lifting time of 55 seconds
- ▶ 115% dynamic loading and 150% static loading test
- ▶ 24V operating button
- ▶ Aluminium motor



E2040WB

Everlift - 4.0T Two Post Lift with Base

- ▶ Lifting capacity of 4000kg
- ▶ Lifting height of 1900mm
- ▶ Minimum height of 100mm
- ▶ Inside column height of 2824mm
- ▶ Post height of 2826mm
- ▶ Lifting time of 55 seconds
- ▶ 115% dynamic loading and 150% static loading test
- ▶ 1P54ABS control box and 24V operating button
- ▶ Electrical single release
- ▶ 2.2KW aluminium motor



E1030MRSL

Everlift - 3.0T Mid-Rise Scissor Lift

- ▶ Lifting capacity of 3000kg
- ▶ Maximum lifting height of 1000mm
- ▶ Minimum lifting height of 105mm
- ▶ Raising speed of 1200mm/min.
- ▶ 240V single phase motor
- ▶ Mobile kit for mobility and flexibility of location
- ▶ 1P54ABS control box and 24V operating button
- ▶ Pneumatic safety lock
- ▶ 2.2KW aluminium motor
- ▶ Toe protection

E1030SL

Everlift 3.0T Scissor Lift *

- ▶ Lifting capacity of 3000kg
- ▶ Electro-hydraulic power system
- ▶ Surface mounted
- ▶ Maximum lifting height of 1800mm
- ▶ Minimum height of 110mm
- ▶ Lifting time of 50 seconds
- ▶ Pneumatic safety lock
- ▶ 2.2KW Aluminium motor prevents overheating



E1050WASL

Everlift - 5.0T Alignment Scissor Lift

- ▶ Lifting capacity of 5000kg
- ▶ Electrical synchronisation of platforms
- ▶ In ground installation
- ▶ Platform width of 600mm
- ▶ Platform length of 5100mm
- ▶ Long rear sliding plate
- ▶ 24V control system
- ▶ 24V limit switch
- ▶ Pneumatic locking system
- ▶ Aluminium motor prevents overheating





E4040

Everlift - 4.0T Four Post Lift

- ▶ Lifting capacity of 4000kg
- ▶ Lifting height of 1830mm
- ▶ Minimum height of 155mm
- ▶ Inside column height of 2216mm
- ▶ Post height of 2338mm
- ▶ Top limitation switch
- ▶ Toe protection device alarms
- ▶ Aluminium motor
- ▶ 24 volt operation

E4040WAL-2J

Everlift - 4.0T Four Post Wheel Alignment Lift Includes 2 Jacking Beams

- ▶ Lifting capacity of 4000kg
- ▶ Lifting height of 1830mm
- ▶ Minimum height of 155mm
- ▶ Inside column height of 2216mm
- ▶ Post height of 2338mm
- ▶ Top limitation switch
- ▶ Toe protection device alarms
- ▶ Aluminium motor
- ▶ 24 volt operation



404030MJB

Everlift - 3.0T Manually Operated Jacking Beam For E4040 and E4040WAL Hoists

Also available:
404030PJB EVERLIFT 3.0T
pneumatically operated jacking beam

Unite

Unite is a leading Chinese manufacturing specialist with more than 10 years experience in researching, developing, and manufacturing automotive service equipment such as tyre changers, wheel balancers and wheel alignment equipment.

Their current manufacturing facility is more than 9,000 square meters in size, and takes pride of their highly skilled labour force of 140 associates.

All their equipment is manufactured using precise jig assembly and carries out pre-delivery prior to packaging.

UNITE carries an ample range of spare parts available for future repairs and a great range of accessories.

The Wheel balancer factory is opposite to the tyre changer factory, keeping them in separate departments.

Large Training/Showroom Facility

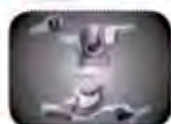
As one of the fastest growing companies in China's automotive service equipment industry, they have established a nation-wide customer base with significant expansion into global markets and have achieved successful business cooperation with customers from more than 40 countries and regions.

UNITE are proud to be a customer-oriented organization, and are committed to technological innovation and people first management principle.



U-201 Tyre Changer

- ▶ Semi automatic side swing arm
- ▶ Large 24" turntable suitable for low profile tyres
- ▶ Innovative design and easy to operate
- ▶ Shovel with blade protector ensures bead breaking without damaging the rim or tyre
- ▶ Maximum wheel diameter 41" (1040mm)
- ▶ Maximum wheel width 14" (355mm)
- ▶ Air supply, 8bar



- ▶ Designed mount and demount head equipped with plastic protector



- ▶ Shovel with blade protector facilitate bead breaking without damaging the rim or tyre



- ▶ Outside clamping: 12"- 23"
- ▶ Inside clamping: 14"- 26"

U-2091A Tyre Changer

- ▶ Pneumatic operated tilting column
- ▶ Automatic pneumatic right help arm device
- ▶ Tubeless tyre inflating device
- ▶ Large 26" turntable suitable for low profile tyres
- ▶ Shovel with blade protector ensures bead breaking without damaging the rim or tyre
- ▶ Maximum wheel diameter 45" (1143mm)
- ▶ Maximum wheel width 16" (406mm)
- ▶ Quick air booster joints the tyre and rim instantly



- ▶ Nylon pressing roller makes it easier to demount the tyre



- ▶ Bead breaker blade can be freely adjusted
- ▶ Shovel with blade protector facilitate bead breaking without damaging the rim or tyre



- ▶ Equipped with tubeless tyre inflating device
- ▶ Outside clamping: 12"- 23"
- ▶ Inside clamping: 14"- 26"

U-231 Tyre Changer

- ▶ Fully automatic pneumatic tilting column
- ▶ Pneumatic locking of both vertical and horizontal distance
- ▶ Bead breaker blade can be freely adjusted
- ▶ Large 26" turntable suitable for low profile tyres
- ▶ Shovel with blade protector ensures bead breaking without damaging the rim or tyre
- ▶ Maximum wheel diameter 45" (1143mm)
- ▶ Maximum wheel width 16" (406mm)
- ▶ High strength steel pedal



- ▶ Pneumatic locking both vertical and horizontal distance



- ▶ Outside clamping: 12" - 23"
- ▶ Inside clamping: 14" - 26"



- ▶ Bead breaker blade can be freely adjusted
- ▶ Shovel with blade protector facilitate bead breaking without damaging the rim or tyre

U-226A Tyre Changer

- ▶ Fully automatic pneumatic tilting column
- ▶ Pneumatic locking of both vertical and horizontal distance
- ▶ Helping arm with central locking device
- ▶ Tubeless tyre inflating device
- ▶ Bigger and longer body
- ▶ Large 24" turntable suitable for low profile tyres
- ▶ Maximum wheel diameter 41" (1040mm)
- ▶ Maximum wheel width 14" (355mm)
- ▶ High strength alloy pedal



- ▶ Helper arm with central locking device



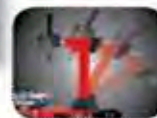
- ▶ Pneumatic locking both vertical and horizontal distance



- ▶ Equipped with tubeless tyre inflating device
- ▶ Outside clamping: 12" - 23"
- ▶ Inside clamping: 14" - 26"

U-236A Tyre Changer

- ▶ Fully automatic pneumatic tilting column
- ▶ Pneumatic locking of both vertical and horizontal distance
- ▶ Helping arm with central locking device
- ▶ Tubeless tyre inflating device
- ▶ Bigger and longer body
- ▶ Large 26" turntable suitable for low profile tyres
- ▶ Maximum wheel diameter 45" (1143mm)
- ▶ Maximum wheel width 16" (406mm)
- ▶ High strength steel pedal



- ▶ Pneumatic locking both vertical and horizontal distance



- ▶ Equipped with tubeless tyre inflating device
- ▶ Outside clamping: 12" - 23"
- ▶ Inside clamping: 14" - 26"



- ▶ Helper arm with central locking device
- ▶ Tyre pressing roller

U-800 Wheel Balancer

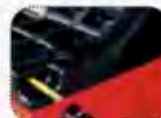
- ▶ Manually operated distance and wheel diameter input
- ▶ Highly accurate and highly stable integrated circuit
- ▶ Self-calibration and diagnostic functions
- ▶ LED numeric display screen
- ▶ Maximum wheel weight 65kg
- ▶ Rim diameter 10" - 24"
- ▶ Rim width 1.5" - 20"
- ▶ Measuring time 8 seconds
- ▶ Balancing accuracy ± 1.0



- ▶ Optional: set of cones, wheel width calliper, plastic lid, counter plier, quick release nut



- ▶ LED numeric display screen
- ▶ Self-calibration and diagnosis



- ▶ Rim size available 10"-24"

U-828 Wheel Balancer

- ▶ Highly accurate central processing microcomputer
- ▶ 5 different balancing programmes
- ▶ Hidden spokes and weight split programme
- ▶ Self-calibration and diagnostic functions
- ▶ LED numeric display screen
- ▶ Automatically finds the exact position for locating and applying adhesive weights
- ▶ Maximum wheel weight 65kg
- ▶ Rim diameter 10" - 24"
- ▶ Rim width 1.5" - 20"
- ▶ Measuring time 8 seconds
- ▶ Balancing accuracy ± 1



- ▶ The ruler head can bear the adhesive weights
- ▶ Hidden spokes and weight split program
- ▶ Automatically find the exact position for the application of adhesive weights



- ▶ Luxury LED numeric display screen
- ▶ 5 different balancing programs
- ▶ Microcomputer central process unit



- ▶ Optional: set of cones, wheel width calliper, plastic lid, counter plier, quick release nut



Manatec



Manatec is an ISO 9001 : 2008 certified organisation, located in Puducherry, on the East Coast of South India. Manatec, established in 1987, started with designing and manufacturing of Industrial Shaft Alignment systems and diversified to the Automotive Garage Equipment design and manufacturing, since 1991.

The global automotive industry is ever growing, with constant innovations in technology resulting in a surge of new automobile models launched everyday. It poses equal challenge in after market maintenance and servicing needs. Manatec's Garage Equipment Division works with the objective of meeting the above challenge by designing high quality service station equipment in-line with the emerging trends in the industry.

The manufacturing facility incorporates Electronics Hardware and Software processing departments, Tool Room, Machine Shop, Quality Assurance and separate Production bays for every product with world class infrastructure.

For the workforce in Manatec, Quality and Technology is not just a requirement, it is a state of mind.



Z8016R5

Computerised Wheel Aligner

- ▶ 6CCD - Infra red Wireless technology for data acquisition
- ▶ RF Zigbee technology for data communication to main console
- ▶ Run-out for all four wheels are measured and displayed simultaneously in a single Push-Pull without jacking up the vehicle.
- ▶ Unique spoiler program to perform alignment on low body vehicles up to 32mm tilt. Sensor heads can further be lowered by 75mm using low body extension adaptors.
- ▶ Suitable for general mechanical workshops, dealerships and small tyre shops
- ▶ Includes 1 set of standard wheel clamps, turntables, brake pedal depressor and steering lock



Z8014R5

Computerised Wheel Aligner

- ▶ 8CCD - Infra red Wireless technology for data acquisition
- ▶ RF Zigbee technology for data communication to main console
- ▶ Measures all wheel alignment parameters with excellent range and accuracy
- ▶ Run-out of all four wheels are measured and displayed simultaneously in a single Push-Pull without jacking up the vehicle
- ▶ Special software for adjusting the camber in jacked up position.
- ▶ Unique spoiler program to perform alignment on low body vehicles up to 31mm tilt. Sensor heads can further be lowered by 75mm
- ▶ Suitable for medium size tyre shops and panel shops
- ▶ Includes 1 set of standard wheel clamps, turntables, brake pedal depressor and steering lock



▶ 47081A



47081A

Air Conditioning Fluid Recharger

- ▶ Fully automatic air conditioning fluid recharging machine complete with printer
- ▶ 240V operation with acoustic and visual service alarm alerting the operator that maintenance and filter replacement are required
- ▶ Programmable charging with a preset quantity of refrigerant plus automatic stop
- ▶ Settable vacuum test
- ▶ Automatic oil injection up to 100gram
- ▶ Internal gas tank of 18kg capacity
- ▶ Automatic bottle heating
- ▶ 3 Glycerin type with "Ok - Bad" Scale with bottle pressure gauge
- ▶ Vacuum pump capacity of 72LPM

47070A

Fully Automatic ATF Changer

- ▶ Automatically replaces up to 99% of a vehicle's transmission fluid
- ▶ Sturdy compact design
- ▶ A complete ATF exchange done in 15 minutes or less
- ▶ No need to tie up a vehicle hoist and a qualified mechanic
- ▶ Ideal for taxi workshops and workshops undertaking a lot of work on late model vehicles which don't have dipstick capability

▶ 47070A



▶ 47041A

47041A

Coolant Flusher

- ▶ Extracts and replaces coolant from a vehicle's radiator, engine block and heater core utilising compressed air
- ▶ Pneumatic design for easy fluid changing
- ▶ Transparent twin 16 litres capacity cylinders to assist in the monitoring of the extraction and recharging process
- ▶ Air operated - no AC or DC power required
- ▶ Completely changes radiator coolant in less than 5 minutes
- ▶ Supplied with radiator adaptors to suit most vehicles
- ▶ Sturdy, compact and maintenance free
- ▶ Dimensions of 330mm (D) x 450mm (W) x 1400mm (H)
- ▶ Weight of 44kg

47010

Power Steering Fluid Exchanger

- ▶ 12volt operation results in quick and easy power steering fluid change over
- ▶ New fluid tank of 5 litres capacity
- ▶ Waste fluid tank of 16 litres capacity
- ▶ Working pressure of 5 bar (70psi) to 8 bar (112psi)
- ▶ Generally used in mechanical workshops where power steering systems have failed



▶ 47010



▶ 47050

47050

Mobile Carbon Flush Machine

- ▶ Operates off a 12volt power supply (vehicle battery)
- ▶ Includes programmed alarms which will shut the system down if insufficient system pressure, excess system pressure or the end of the cycle conditions are identified
- ▶ Includes a 100 decibels acoustic alarm
- ▶ Includes two 2 litre graduated tanks
- ▶ Includes 22 piece adaptor kit for connection to injection systems
- ▶ Includes two independent pumps, one for diesel and one for petrol with adjustable flow features
- ▶ Manufactured in Spain with CE approval

ATNV100-10

Fume Extraction Equipment

- ▶ Reduce vehicle emissions by improving air quality in your workshop
- ▶ Spring, push button or cordless remote rewind option available
- ▶ Equipped with an internal fan
- ▶ Various models available for motorbikes, car, buses and trucks
- ▶ Fixed, or with the aid of channel rails, mobile operation is possible
- ▶ Supply, installation and commissioning readily available
- ▶ Suitable for cars and light commercial vehicles
- ▶ OH&S friendly



▶ ATNV100-10



▶ AP1 75/5 240V

AP1 75/5 240V

Wall Mounted Fume Extractor

- ▶ Wall mounted fume extraction system suitable for cars and industrial vehicles such as forklifts etc
- ▶ Cost effective system that is ideal for small workshops, tyre stores and quick lube tune up bays
- ▶ 240V plug and play for do it yourself easy installation
- ▶ Comes complete with 5 metres of 75mm ID light rubber hose reinforced with squash resistant nylon spiral, rated to a maximum of 130°C and rubber exhaust nozzle

AP1 75/5

Wall Mounted Fume Extractor

- ▶ Wall mounted fume extraction system suitable for cars and industrial vehicles such as forklifts etc
- ▶ Cost effective system that is ideal for small workshops, tyre stores and quick lube tune up bays
- ▶ 415V plug and play for do it yourself easy installation
- ▶ Comes complete with 5 metres of 75mm ID light rubber hose reinforced with squash resistant nylon spiral, rated to a maximum of 130°C and rubber exhaust nozzle



▶ AP1 75/5



▶ 675

675

Mobile Air Operated Extractor

- ▶ Attached compressed air creates a high speed flow inside the chamber which extracts the exhaust gases
- ▶ One model is suitable for cars, vans, motorcycles and trucks by using either of two diaphragms
- ▶ Completely mobile with hose support integrated in the trolley
- ▶ Rubber nozzle to protect the vehicle body
- ▶ Suitable for fitting CO2 control probes
- ▶ Air consumption 330l/min. with 4 HP compressor



▶ 372400

372400

Samoa Mobile Waste Oil Drain

- ▶ Premium quality and European engineering
- ▶ Drain bowl capacity of 20 litres
- ▶ Holding tank capacity of 100 litres
- ▶ Maximum working height of 2000mm
- ▶ Minimum working height of 1500mm
- ▶ Unique specially moulded tray can be used to hold bolts, filters and washers
- ▶ Heavy duty, large and swivelling (front only) castors facilitate maximum unit mobility
- ▶ Unique and adjustable off centre catchment bowl assists in vehicle waste fluid collection
- ▶ Collected vehicle waste fluids can be pressurised or pumped out of the 100 litre capacity holding tank
- ▶ Makes the handling and disposing of waste oil a breeze



▶ 30080

30080

Mobile Waste Oil Drainer

- ▶ Transfers and captures waste oil from crankcases, transmissions and differentials
- ▶ Holding tank capacity of 80 litres
- ▶ Height adjustable waste oil reservoir
- ▶ Reservoir oil level gauge indicates the drained oil quantity
- ▶ Holding tank emptied with the aid of air pressure
- ▶ Equipped with a pneumatic safety relief valve calibrated at 14psi
- ▶ 12 month warranty



▶ 372500

372500

Samoa Mobile Waste Oil Drainer & Extractor

- ▶ Drains and/or extracts waste oil from cars and light commercial vehicles
- ▶ Drain bowl capacity of 20 litres
- ▶ Holding tank capacity of 100 litres
- ▶ Maximum working height of 2000mm
- ▶ Minimum working height of 1600mm
- ▶ Suction hose includes a rubber grip and a non drip cap
- ▶ Ideal use with all type of passenger cars and light commercial vehicles

30091

Mobile Waste Oil Extractor

- ▶ Extracts and captures waste oil from crankcases, transmissions and differentials
- ▶ Clear inspection chamber capacity of 12 litres
- ▶ Holding tank capacity of 80 litres
- ▶ Chamber depressurisation time of 25 seconds
- ▶ Suction speed of 6.5 litres per minute
- ▶ Suction hose specification of 1/2" x 2000mm
- ▶ Draining hose length of 1" x 2000mm
- ▶ Draining pressure of 14psi
- ▶ 1/4" air inlet connection
- ▶ 12 month warranty

30090 Mobile waste oil extractor without clear inspection chamber



▶ 30091



▶ 372000

372000

Samoa Mobile Waste Oil Drainer & Extractor

- ▶ Drains and/or extracts waste oil from cars and light commercial vehicles
- ▶ Drain bowl capacity of 20 litres
- ▶ Holding tank capacity of 100 litres
- ▶ Clear viewing inspection bowl capacity of 8 litres
- ▶ Maximum working height of 2000mm
- ▶ Minimum working height of 1600mm
- ▶ Suction hose includes a rubber grip and a non drip cap



▶ 30101

30101

Mobile Waste Oil Extractor & Drainer

- ▶ Transfers and captures waste oil from crankcases, transmissions and differentials
- ▶ Holding tank capacity of 80 litres
- ▶ Height adjustable waste oil reservoir
- ▶ Holding tank emptied with the aid of air pressure
- ▶ Suction speed rate of 6.5 litres per minute
- ▶ 12 month warranty

30100 without 12L inspection reservoir



SJ-400-001

Spill Container Drum Trolley

- ▶ Mobile liquid dispensing and spill containment unit
- ▶ 100% recyclable polyethylene construction
- ▶ Sump capacity of 250 litres
- ▶ Vertical spill containment of up to 3 litres
- ▶ Cannot rust or corrode
- ▶ Double walled construction for strength and securing against leaks
- ▶ Rubber wheels as standard
- ▶ 205L drum secured with a ratchet strap
- ▶ Safety support locks into place for easy vertical loading and storage

▶ SJ-300-001

▶ SJ-300-006

300 SERIES

Modular Workfloor & Spill Containers

- ▶ Provides a dedicated spill containment and fluid dispensing area
- ▶ 100% recyclable polyethylene construction
- ▶ Slip resistant texture on workfloor deck and ramp
- ▶ Cannot rust or corrode
- ▶ Excellent chemical compatibility
- ▶ Dimensions of 800mm (L) x 1600mm (W) x 150mm (H)
- ▶ SJ-300-001 / SJ-300-006 complies with German DIBt Certification: Z-40.22-443
- ▶ SJ-300-001 2 x 205L drum workfloor & spill container
Dimensions of 800mm (L) x 1600mm (W) x 150mm (H)
Sump capacity of 120L, weight of 24kg
- ▶ SJ-300-006 4 x 205L drum workfloor & spill container
Dimensions of 1600mm (L) x 1600mm (W) x 150mm (H)
Sump capacity of 240L, weight of 45kg
- ▶ SJ-300-010 Workfloor ramp
Dimensions of 1290mm (L) x 810mm (W) x 180mm (H), weight of 15kg

▶ SJ-300-010



▶ SJ-100-006

100 SERIES

2 & 4 Drum Spill Containers

- ▶ Holds up to 4 x 205 litre drums
- ▶ 100% recyclable polyethylene construction
- ▶ Non-skid removable deck
- ▶ Compatible with most fork lifts and pallet trucks
- ▶ Excellent chemical resistance
- ▶ Help to create an OH&S compliant work place environment
- ▶ Complies with German DIBt Certification: Z-40.22-380
- ▶ SJ-100-002 2 drum spill container
Dimensions of 750mm (L) x 1300mm(W) x 400mm (H)
Sump capacity of 236L, weight of 20kg
- ▶ SJ-100-006 4 drum spill container
Dimensions of 1290mm (L) x 1380mm (W) x 280mm (H)
Sump capacity of 242L, weight of 30kg

500 SERIES

IBC Spill Containers

- ▶ Perfect solution for containing spills from either 1,000 or 2,000 IBC units
- ▶ Solid construction and practical design
- ▶ 100% recyclable polyethylene construction
- ▶ Capacity of 1,100 litres
- ▶ Compatible with most forklifts and pallet trucks
- ▶ The single IBC spill container can be used with or without a deck
- ▶ Complies with German DIBt Certification: Z-40.22-451
- ▶ SJ-500-001 IBC spill container -single
Dimensions of 1450mm (L) x 1450mm (W) x 1000mm (H)
Sump capacity of 1,100L, weight of 105kg
- ▶ SJ-500-003 IBC spill container - double
Dimensions of 2450mm (L) x 1450mm (W) x 575mm (H)
Sump capacity of 1,100L, weight of 120kg



▶ SJ-500-001



▶ SJ-200-010

200 SERIES

2 & 4 Drum Rack & Spill Containers

- ▶ Securely stack up to 4 x 205 litre drums
- ▶ 100% recyclable polyethylene construction
- ▶ Drum rack (SJ-200-002) to be used with drum rack base only
- ▶ Compatible with most fork lifts and pallet trucks
- ▶ SJ-200-003 complies with German DIBt Certification: Z-40.22-380
- ▶ SJ-200-003 2 drum spill container
Dimensions of 1350mm (L) x 1375mm (W) x 635mm (H)
Sump capacity of 450L, weight of 46kg
- ▶ SJ-200-010 4 drum spill container
Dimensions of 940mm (L) x 1375mm (W) x 390mm (H)
Sump capacity of 450L, weight of 15kg

Alemlube has many years experience in the automotive industry specialising in workshop design, workshop fitout, equipment supply and equipment installation.

Following extensive consultation with you, the Alemlube team will design your new workshop maximising the available space and resulting in a practical, functional and efficient solution.

Furthermore, Alemlube will assist the Architect to ensure that all requirements are met in relation to power specifications and suitable locations for all relevant vehicle hoists, compressors and general workshop equipment.

Accessing an extensive range of automotive workshop equipment from the world's foremost manufacturers, Alemlube can supply and install all necessary equipment and components in addition to customised manufacturing, including:

- *Air, oil, and water supply lines regardless of size and scope, and incorporate a quality range of fluid handling equipment, for example air operated lube pumps, hose reels and electronic oil meters.*
- *Australian compliant vehicle hoists, 2 post, 4 post and scissor*
- *An impressive range of tyre changers, wheel balancers and wheel aligners*
- *Exhaust extraction equipment to service any situation from a single bay workshop to a multi-bay automotive dealership*
- *Bulk waste and new oil storage requirements manufactured to suit your specific space and volume considerations*
- *Workshop benches, manufactured to any specification to suit your needs and available in your corporate colour*

Alemlube provides successful dealer principles and workshop managers with cost effective solutions to their workshop fitout requirements, no matter what size or level of infrastructure.



“ The complete workshop is what we do best. You can trust the design, supply of equipment, installation and commissioning of your workshop equipment to the dedicated expert team at Alemlube. ”



Alemlube operates first class fabrication facilities managed by highly qualified industry professionals and manufactures a variety of purpose built workshop fixtures, storage tanks and custom metal fabrication.

Specialities include workshop benches to any specification, size, height and width. Any requirement to suit your particular need can be designed and included in the manufacturing, be it powder coated or stainless steel and inclusive of any corporate colour identity.



Additionally, storage tanks for grease, oil and waste oil are consistently being manufactured to any specification and are completely compliant with all OH&S regulations.

Alemlube always aims to exceed your expectations of quality, installation service, functionality and reliability. The fabrication division also designs systems for and fits out a range of service vehicles for any scale of operation.



The design and planning stage begins with a complete overview of the final architectural drawings.

Consultation then takes place with all personnel involved in the operation of the service workshop facility. We come away with an understanding of the direction that needs to be followed to produce the required solution.

The layout plan of the facility now proceeds specifying the location of vehicle hoists, required services such as oil reticulation, compressed air supply, water supply and waste oil services.

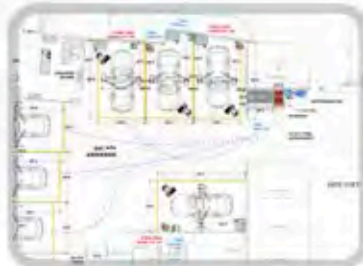


All specific measurements will be noted in relation to locations of equipment, such as vehicle hoists, to enable the accurate documentation of power and other operational service needs.

The design gives you the client, a visual impression of the form that the service workshop will take after considering all aspects desired to provide the optimal result in the space available. Additionally, we can provide a CAD drawing giving a more full perspective of the layout.

The completed layout plan is effectively a working drawing to hand over to the builder, electrician, plumber etc. And, the plan indicates to you exactly what Alemlube will be proposing in a tender for the workshop fitout.





Turning workshop ideas into reality becomes clear with the development of an accurate floorplan.

Time taken in researching and consultation between all parties to arrive at the ultimate solution for your practical workshop is invaluable.

The culmination of all ideas, technical considerations, equipment location and traffic workflow for vehicles and personnel is now locked in and committed to floorplan.

Additional detail relating to exhaust fume extraction, bulk oil storage, waste oil extraction/evacuation, as well as oil, water and air distribution lines can also be specified.





▶ **Alemlube** has been servicing the workshop industry for 30 years as a quality equipment supplier of lubrication equipment, greasing equipment and vehicle hoists. And more recently servicing and installing wheel service equipment.

We have built our reputation on customer service and reliable backup.

All equipment purchased from the manufacturer is pre-delivered and calibrated, ensuring that you have a trouble free operation from the day of delivery.

Our technicians are factory trained to ensure your equipment is serviced according to manufacturer's recommendations.

Our wheel service division consists of an experienced Technical Support Manager with 20 years experience in the wheel service equipment field, and five service technicians around Australia. Together they are committed to offer after sales support.

The following services are available to ensure your equipment runs trouble free throughout its lifetime:

- ▶ *Optional extended warranty plans, up to 3 years from purchase*
- Service maintenance plans to suit your equipment requirements and budget, for example*
- ▶ *1, 2, 3 or 4 visits per year including parts*
- ▶ *1,2,3 or 4 visits per year, labour only*

For service contact your nearest Alemlube Branch:

NSW	(02) 9939 0711
QLD/PNG	(07) 3204 9166
WA	(08) 9209 3066
VIC/TAS	(03) 8787 8288
SA/NT	(08) 8241 7111
NZ	(64) 9 447 1007

Alemlube carries a great range of parts and accessories for your wheel service equipment.



AUTOMATIC LUBE SYSTEMS • HOSE REELS • DRUM PUMPS
VEHICLE HOISTS • WHEEL SERVICE EQUIPMENT